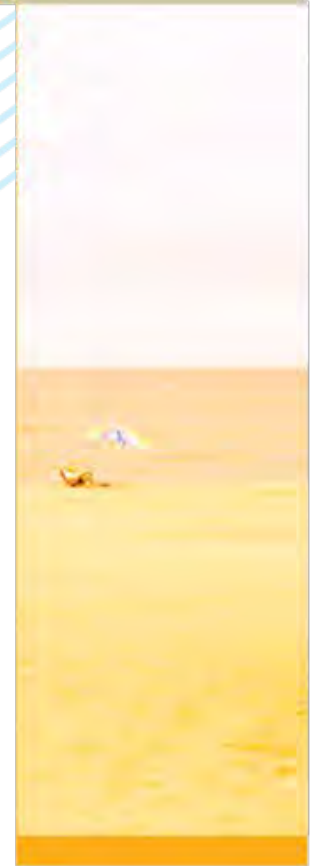




# THE SUSSEX PLAN

## SUSSEX COUNTY COMPREHENSIVE PLAN COUNTY COUNCIL AND PLANNING AND ZONING COMMISSION WORKSHOP



April 10, 2017

# TODAY'S WORKSHOP



- ▶ Public Comment
- ▶ Economic Development Element Update
- ▶ Historic Preservation Element Update
- ▶ Community Design Element Update
- ▶ Utilities Discussion
- ▶ Public Meeting Preparation
- ▶ Public Comment

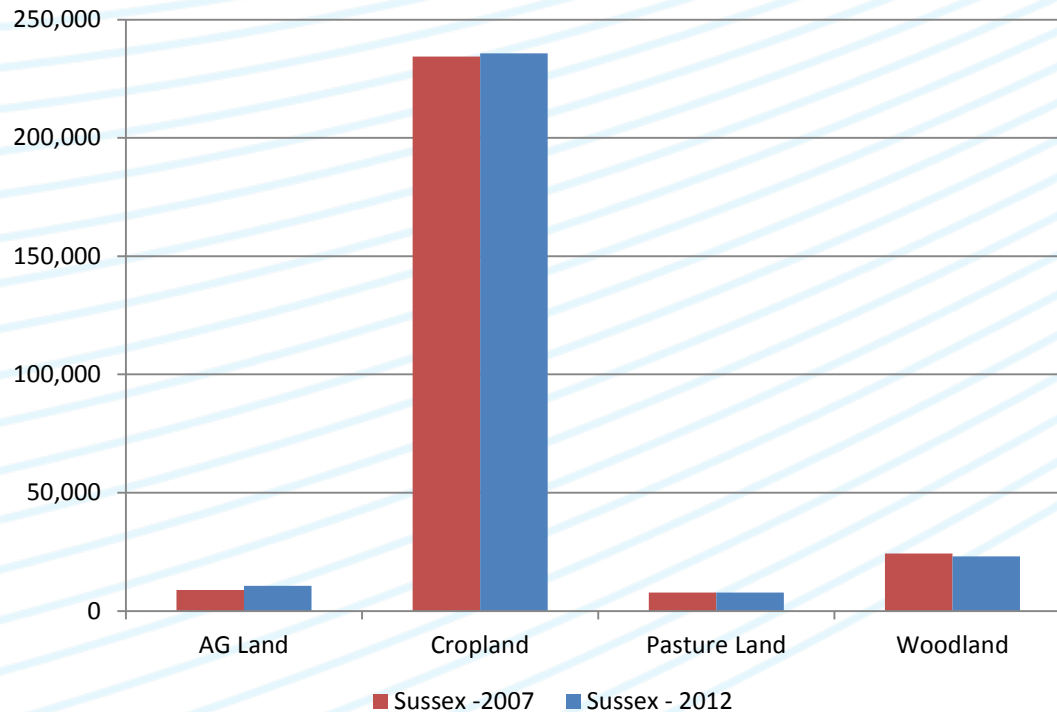


# ECONOMIC DEVELOPMENT



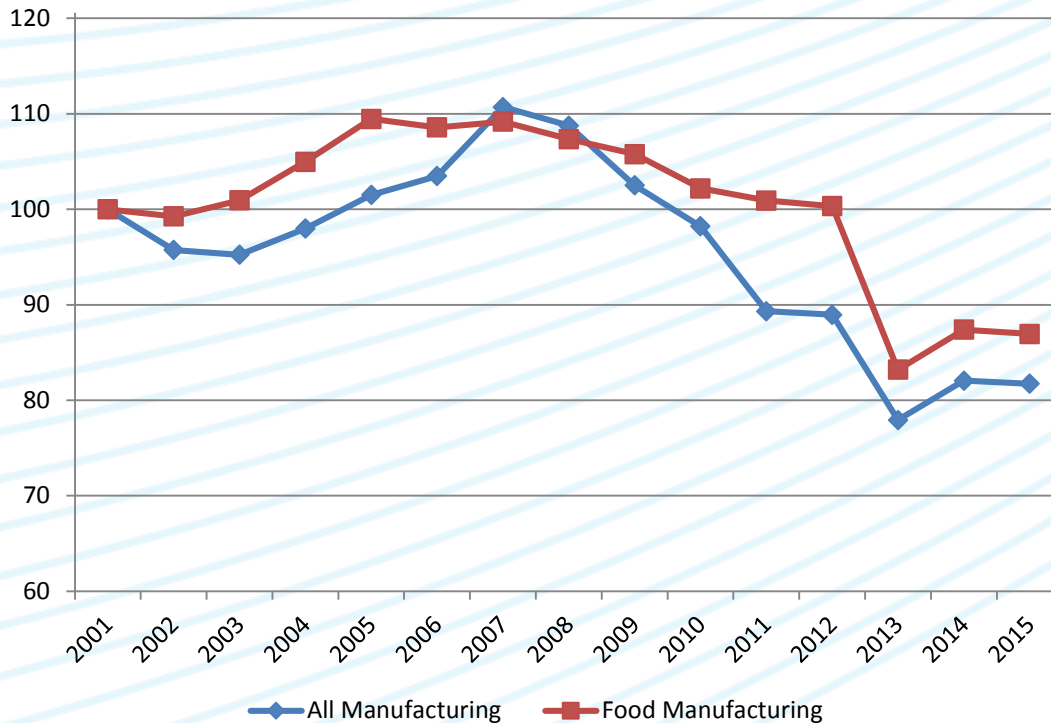
THE SUSSEX PLAN

# ECONOMIC DEVELOPMENT



- ▶ Ag Census divides Ag land into 4 main types - Ag Land, Crop Land, Pasture Land, and Woodland.
- ▶ This only includes Woodland on Farms.

# ECONOMIC DEVELOPMENT

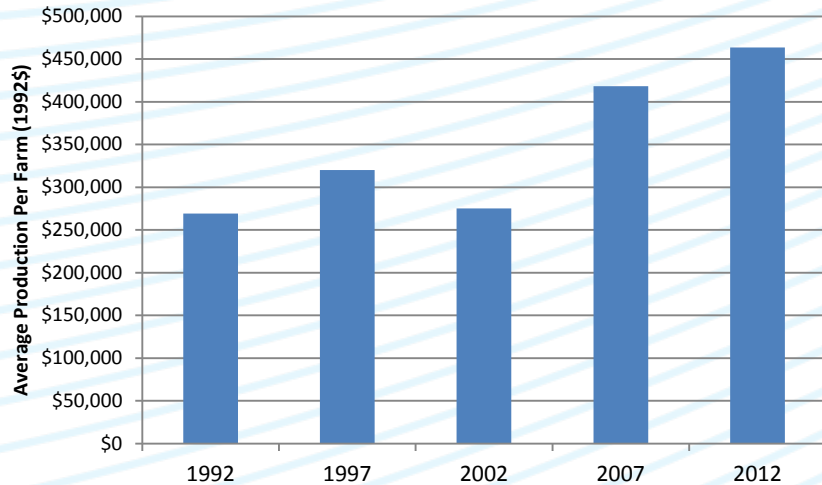


- ▶ Manufacturing includes “Food Manufacturing” which includes Poultry Processing, Animal Food Manufacturing, Fruit and Veg. Preservation, Seafood Processing and Breweries.

# ECONOMIC DEVELOPMENT

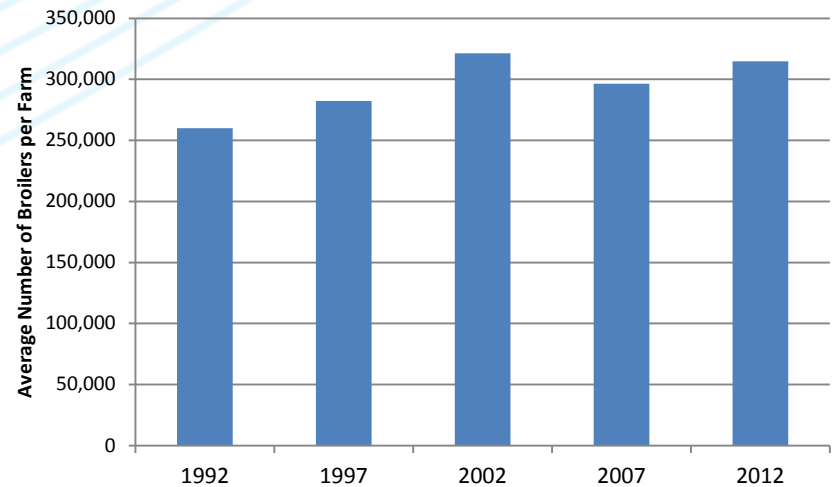


Average Production Per Farm



- ▶ Average production per farm has increased by 72% since 1992.
- ▶ The average number of broilers per farm has increased by 60,000 broilers since 1992.

Average Number of Broilers per Farm





# TOP 25 EMPLOYERS



Employer	Location	Industry
Allen Harim Foods LLC	Seaford, Harbeson	Agriculture/Food Processing
Aloft Aero Architects	Georgetown	Manufacturing
Avalanche Industries	Selbyville	Communications
Bayhealth Milford Memorial	Milford	Healthcare
Beebe Healthcare	Lewes	Healthcare
Burriss Logistics	Milford	Logistics
Cheer, Inc.	Georgetown	Healthcare
Delaware Electrical Cooperative	Greenwood	Electric Utility
Delaware Technical & Community College	Georgetown	Education
Dogfish Head Brewery	Milton	Brewery
Genesis Healthcare	Multiple	Healthcare
Indian River School District	Selbyville	Education
INVISTA	Seaford	Manufacturing
M&T Bank/Wilmington Trust	Multiple	Banking Services
Merck Animal Health	Millsboro	Poultry Chemicals
Mountaire Farms	Millsboro, Selbyville	Agriculture/Food Processing
Nanticoke Memorial Hospital	Seaford	Healthcare
NRG Energy Center	Dagsboro	Electric Utility
Perdue Farms and Perdue Agri-Business	Seaford	Agriculture/Food Processing
Schell Brothers	Rehoboth Beach	Home Builder
SoDel Concepts	Multiple	Leisure & Hospitality
State of Dealaware	Multiple	State Government
Sussex County	Multiple	County Government
Triniry Logistics	Seaford	Logistics
Walmart	Multiple	Retail



# ECONOMIC DEVELOPMENT

- ▶ **2018 Plan Economic Development Element Outline**
  - **Introduction/Overview of Recent Economic Development Activities**
    - Economic Development Mission Statement
  - **Agriculture**
  - **Tourism**
  - **Economic Base and Employment Data**
  - **Economic Development Resources**
    - Funding Sources and Assistance Agencies
    - Industrial Parks
  - **Economic Development Goals, Objectives, and Strategies**





# ECONOMIC DEVELOPMENT

- ▶ **Mission Statement from the SEDAC “Sussex Economic Development Action Plan (January 2010)**

*“To leverage the experience, intellect, and creativity of the Sussex County community to inform, develop, recommend, and communicate strategies for creating sustainable economic prosperity.”*

- ▶ **Alternate Vision Statement for 2018 Sussex County Economic Development Element**

*“Create self-sustaining long-run economic growth in Sussex County by establishing the necessary energies, institutions, and cooperative arrangement.”*



# ECONOMIC DEVELOPMENT

## DRAFT ECONOMIC DEVELOPMENT GOALS AND OBJECTIVES

- ▶ **Goal 6.1 Maintain and strengthen the economic base in the County**
  - **Objective 6.1.1 Develop a better understanding of Sussex County's competitive advantages and how it fits into the regional and national marketplace**
    - Identify current and potential key industries for Sussex County. These industries will be the focus for economic development efforts.
    - Prepare scenario plans to enhance the identified existing and potential industries.
    - Undertake a supply chain analysis of key local industries to identify potential target industries and employers for recruitment.
    - Undertake a business cost analysis to understand how the County compares to other locations.



# ECONOMIC DEVELOPMENT

## DRAFT ECONOMIC DEVELOPMENT GOALS AND OBJECTIVES

- ▶ **Goal 6.1 Maintain and strengthen the economic base in the County**
  - **Objective 6.1.2 Establish, maintain, and anticipate the necessary infrastructure (including but not limited to housing and transportation, communication, technology, infrastructure and utility systems) which supports and fosters quality development for those who live, work, visit, and invest in the County**
    - *Complete long term capital improvements planned for Sussex County's airport.*
    - *Promote the proximity of the airport to clientele that would use the airport.*
    - *Increase operations at the airport in order to get additional airport funding.*
    - *Work with high-speed internet providers to develop strategies to meet the needs of underserved areas.*
    - *Coordinate infrastructure (water, sewer, transportation, electricity, high-speed internet) planning with the need to bring these utilities to areas zoned for business uses.*
    - *Continue coordinating with DeIDOT to provide safe and convenient road access to areas zoned for business uses.*



# ECONOMIC DEVELOPMENT

## DRAFT ECONOMIC DEVELOPMENT GOALS AND OBJECTIVES

- ▶ **Goal 6.1 Maintain and strengthen the economic base in the County**
  - **Objective 6.1.3 Make economic development something that is woven into the County's entire decision-making process**
    - Undertake a comprehensive analysis of the County and local regulations to identify those regulations that may be inhibiting economic growth.
    - Undertake a comprehensive examination of the economic development process in the County and identify potential areas for streamlining.
    - Strengthen the Economic Development Office by ensuring that the Office has the necessary resources.
    - The County Council should take a leadership role to ensure that all County departments are supporting economic development.
    - Formalize and strengthen the SEDAC and establish a defined membership that is appointed by the County Council.





# ECONOMIC DEVELOPMENT

## DRAFT ECONOMIC DEVELOPMENT GOALS AND OBJECTIVES

- ▶ **Goal 6.1 Maintain and strengthen the economic base in the County**
  - **Objective 6.1.4 Support small local businesses and County-based industries**
    - Establish a Sussex County Business Resource Center that can provide a one stop-shop for businesses that move to the County or existing businesses that want to expand.
    - Undertake a supply chain analysis of key local industries to identify potential target industries and employers for recruitment.
    - Establish a small business advisory council to SEDAC that is comprised of local businesses owners.



# ECONOMIC DEVELOPMENT

## DRAFT ECONOMIC DEVELOPMENT GOALS AND OBJECTIVES

- ▶ **Goal 6.1 Maintain and strengthen the economic base in the County**
  - **Objective 6.1.5 Continue job-training and partnerships with education institutions, local employers, local governments, chambers of commerce, state agencies, and non-profits**
    - *Sussex County Economic Development Department should act as a “matchmaker” between current and potential employers and local educational institutions.*
    - *Continue to coordinate with local educational institutions and employers to understand current County job openings and structure job training and professional development programs to efficiently train up local workforce.*
    - Establish a committee comprised of major healthcare employers, Del Tech, Sussex Tech and other educational institutions, and County officials. The purpose of the committee will be to identify job training needs and develop programs to meet current and future needs for the rapidly growing healthcare sector.



# ECONOMIC DEVELOPMENT

## DRAFT ECONOMIC DEVELOPMENT GOALS AND OBJECTIVES

### ▶ Goal 6.2 Encourage economic diversity and expansion

- Objective 6.2.1 Encourage a mix of economic industries that generate well-paying jobs
  - Identify current and potential key industries for Sussex County. These industries will be the basis for economic development efforts.
  - *The Economic Development Office should actively promote the County to industries and employers that provide employment opportunities for year-round permanent jobs that offer the opportunity of advancement.*
  - Undertake a supply chain analysis of key local industries to identify potential target industries and employers for recruitment.
  - Undertake a business cost analysis to understand how the County compares to other locations.



# ECONOMIC DEVELOPMENT

## DRAFT ECONOMIC DEVELOPMENT GOALS AND OBJECTIVES

### ▶ Goal 6.2 Encourage economic diversity and expansion

- Objective 6.2.2 Provide an adequate supply of vacant, development-ready land for commercial and industrial use while encouraging development that is environmentally sensitive
  - Review zoning code and development process to see if there are prohibitive costs to development for industrial park developers.
  - Consider implementing development incentives for private sector industrial park developers.
  - Complete the current expansion of the Sussex County Industrial Park and identify potential areas for additional expansion.
  - Identify areas within the electricity coop overlay for additional industrial park expansion.
  - Identify areas within the County for potential rezoning to LI1 and LI2 where key infrastructure exists.





# ECONOMIC DEVELOPMENT

## DRAFT ECONOMIC DEVELOPMENT GOALS AND OBJECTIVES

### ▶ Goal 6.2 Encourage economic diversity and expansion

- Objective 6.2.3 Foster an economy that supports and expands existing local businesses while pursuing larger businesses that are suited to the County that are willing to train an entry-level workforce and are experiencing growth
  - Establish a Sussex County Business Resource Center that can provide a one stop-shop for businesses that move to the County or existing businesses that want to expand.
  - *The Economic Development Office should actively promote the County to industries and employers that provide employment opportunities for year-round permanent jobs that offer the opportunity of advancement.*



# ECONOMIC DEVELOPMENT

## DRAFT ECONOMIC DEVELOPMENT GOALS AND OBJECTIVES

### ▶ Goal 6.2 Encourage economic diversity and expansion

- Objective 6.2.4 Increase the number of small firms within the County by fostering local entrepreneurship
  - Assess the entrepreneurial services available within the County and compare the County to other regions deemed to be supportive of entrepreneurship.
  - Create networking, leadership, recognition, and funding programs for entrepreneurs.
  - Identify existing organizations that provide services for entrepreneurs and form a steering committee for entrepreneur advisory assistance.
  - Leverage the experiences of retirees living within the County to mentor entrepreneurs.
  - Establish an entrepreneurship advisory committee under SEDAC that advises SEDAC on entrepreneurship issues.



# ECONOMIC DEVELOPMENT

## DRAFT ECONOMIC DEVELOPMENT GOALS AND OBJECTIVES

### ▶ Goal 6.2 Encourage economic diversity and expansion

- Objective 6.2.5 Develop employment opportunities to help retain Millennials
  - *Learn from best practices of other counties that have growing Millennial populations in order to understand how to attract and retain younger populations.*
  - Recruit at least one Millennial for membership on the SEDAC committee and the various advisory committees.



# ECONOMIC DEVELOPMENT

## DRAFT ECONOMIC DEVELOPMENT GOALS AND OBJECTIVES

### ▶ Goal 6.2 Encourage economic diversity and expansion

- Objective 6.2.6 Build a highly skilled, flexible workforce while identifying the economic needs of the unemployed and underemployed in the region, and encourage programming – including education and retraining – to meet those needs
  - *Sussex County Economic Development Department should act as a “matchmaker” between current and potential employers and local educational institutions.*
  - Identify local job training resources and serve as a one-stop resource to help current and potential employers with their job training needs.
  - Establish a committee comprised of major healthcare employers, Del Tech, Sussex Tech and other educational institutions, and County officials. The purpose of the committee will be identify job training needs and develop programs to meet current and future needs.





# ECONOMIC DEVELOPMENT

## DRAFT ECONOMIC DEVELOPMENT GOALS AND OBJECTIVES

- ▶ **Goal 6.3 Preserve and encourage the expansion of the agriculture and forestry industries in the County**
  - **Objective 6.3.1 Encourage the adoption of policies that promote agriculture as an important economic industry**
    - *Promote and expand land use, zoning and conservation policies and incentives that keep agriculture economically viable in Sussex County.*
    - *Ensure zoning regulations accommodate agribusiness uses in appropriate locations, including businesses that promote new uses for agricultural products and byproducts.*
    - *Establish specialized Agricultural Industry zoning district to encourage and deal with large scale agricultural operations and other value-added businesses.*

# ECONOMIC DEVELOPMENT



## DRAFT ECONOMIC DEVELOPMENT GOALS AND OBJECTIVES

- ▶ **Goal 6.3 Preserve and encourage the expansion of the agriculture and forestry industries in the County**
  - **Objective 6.3.2 Promote and retain agriculture in areas with valuable agricultural land or agricultural operations**
    - Identify areas that have valuable agricultural land or operations that should be maintained and/or strengthened.
    - To the extent possible, ensure that the high-value areas are included in the Agricultural Industry zoning district.

# ECONOMIC DEVELOPMENT



## DRAFT ECONOMIC DEVELOPMENT GOALS AND OBJECTIVES

- ▶ Goal 6.3 Preserve and encourage the expansion of the agriculture and forestry industries in the County
  - Objective 6.3.3 Develop and implement long term strategies to rebuild the forestry industry in Sussex County
    - Include forestry supportive uses in the Agricultural Industry District.
    - Ensure zoning regulations accommodate forestry uses in appropriate locations, including businesses that promote new uses for forestry products and byproducts.



# ECONOMIC DEVELOPMENT

## DRAFT ECONOMIC DEVELOPMENT GOALS AND OBJECTIVES

- ▶ Goal 6.3 Preserve and encourage the expansion of the agriculture and forestry industries in the County
  - Objective 6.3.4 Create opportunities for new investment in agricultural operations and agricultural support industries
    - *Establish specialized Agricultural Industry zoning district to encourage and deal with large scale agricultural operations and other value-added businesses.*
    - Undertake a supply chain analysis of local agricultural operations to identify potential target industries and employers for recruitment.

# ECONOMIC DEVELOPMENT



## DRAFT ECONOMIC DEVELOPMENT GOALS AND OBJECTIVES

- ▶ Goal 6.3 Preserve and encourage the expansion of the agriculture and forestry industries in the County
  - Objective 6.3.5 Promote locally-sourced agriculture and forestry products
    - *Undertake a “Buy-Local” procurement analysis to see where key inputs produced in the County (e.g., agriculture) could better stay in the County; draft initiatives and incentives.*
    - Identify industries that use the agriculture and forestry outputs produced in their county as inputs. Actively recruit firms from the identified industries.



# ECONOMIC DEVELOPMENT



## DRAFT ECONOMIC DEVELOPMENT GOALS AND OBJECTIVES

- ▶ Goal 6.4 Maintain and strengthen the County's position as a tourist destination
  - Objective 6.4.1 Continue to support the growth of the tourism industry in the coastal areas
    - Establish a coastal tourism advisory committee to advise SEDAC and the County on tourism issues.



# ECONOMIC DEVELOPMENT

## DRAFT ECONOMIC DEVELOPMENT GOALS AND OBJECTIVES

- ▶ **Goal 6.4 Maintain and strengthen the County's position as a tourist destination**
  - **Objective 6.4.2 Consider expanding to specialty tourism, such as eco-tourism, agro-tourism, beer/food tourism, and historic tourism**
    - Work with Visit Southern Delaware to promote Sussex County for specialty tourism.
    - Establish a specialty tourism advisory committee to advise SEDAC and the County on specialty tourism issues.

# UTILITIES



# UTILITIES



## ▶ 2008 Water and Wastewater Element Outline

- **Water Supply**
  - Water Supply Providers
  - Water Supply Protection
  - Fire Protection
  - Water Supply Strategies
  
- **Wastewater Treatment**
  - County Wastewater Treatment
  - Municipal Sewer Service
  - Private Sewer Providers
  - On-lot Septic Systems
  - Private Sewer Treatment Service in Public Sewer Districts
  - Wastewater Strategies

# UTILITIES



- ▶ **Considerations for 2018 Utilities Element**
  - **Water Supply**
  - **Wastewater Treatment**
  - **Energy (Electricity and Natural Gas)**
  - **Telecommunications**
  - **Stormwater**
  - **Waste Reduction/Management**



# UTILITIES



Sussex County  
Comprehensive  
Plan

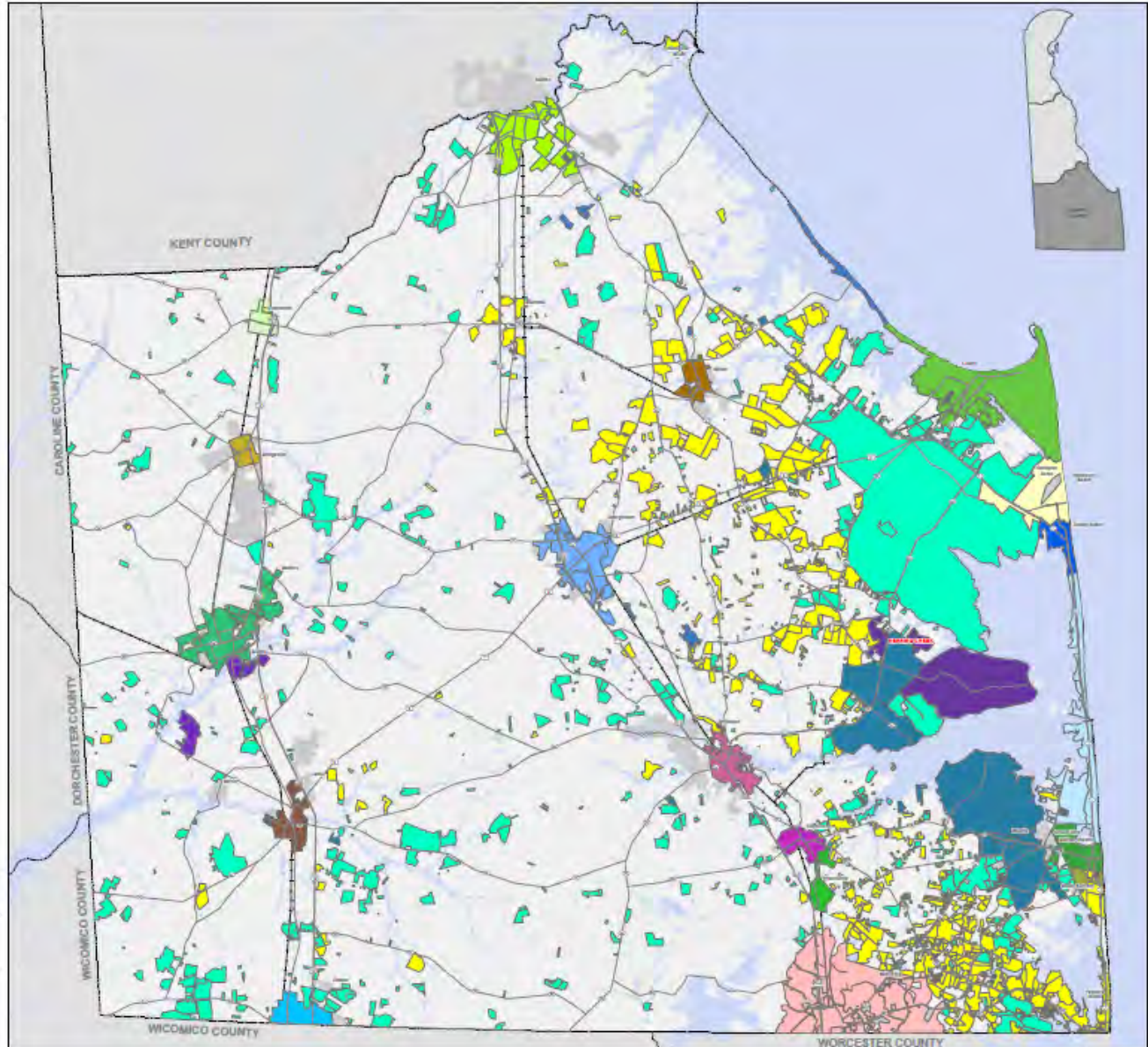
## DRAFT Water Service Areas

- Municipalities
- Water Service Areas that have received CPCNs**
- Water Service Utilities**
- Artesian Water Company, Inc.
- Abandoned
- City of Milford
- City of Rehoboth
- City of Seaford
- J.H. Wikerson & Son
- Lewes Board of Public Works
- Long Neck Water Company
- Public Water Supply
- Southern Shores Water Company
- Sussex County
- Sussex Shores Water Company
- Tidewater Utilities, Inc.
- Town of Bethany Beach
- Town of Blades
- Town of Bridgeville
- Town of Dagsboro
- Town of Delmar
- Town of Frankford
- Town of Georgetown
- Town of Greenwood
- Town of Laurel
- Town of Millsboro
- Town of Milton
- Town of Selbyville

Sources: DE FirstMap, Sussex County Mapping Dept.  
ESDA layer from 2008



0 2.5 5 Miles



57.66\_0.12\_WaterServiceAreaCPCNs\_11x17\_new\_4/6/2017 5:42:00 PM

# UTILITIES



Estimated Projected Water Demand for Sussex County from Public Water Supplies		
Water Purveyor	2010 Peak Day Demand (mgd)	2030 Peak Day Demand (mgd)
Artesian Water Co.	2.61	6.69
Bethany Beach	1.13	1.28
Blades	0.25	0.27
Bridgeville	0.48	0.5
Dagsboro	0.1	0.11
Delmar	0.4	0.42
Frankford	0.19	0.21
Georgetown	1	1.2
Greenwood	0.09	0.1
Laurel	0.73	0.76
Lewes	1.93	2.25
Long Neck Water Co.	1.14	1.32
Milford	1.7	1.84
Millsboro	0.92	0.98
Milton	0.6	0.67
Rehoboth Beach	6.9	7.83
Seaford	1.91	2.03
Selbyville	0.34	0.4
Sussex Shores Water	1.03	1.28
Tidewater Utilities Inc.	7.04	18.69

Source: DNREC Division of Water; Delaware Geological Survey; University of Delaware  
 Twelfth Report to the Governor and General Assembly Regarding the Progress of the Delaware Water Supply  
 Coordinating Council  
 Estimates of Water Supply & Demand for Kent County and Sussex County through 2030  
 June 20, 2014


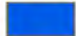


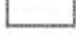




# UTILITIES



Sussex County  
Comprehensive  
Plan

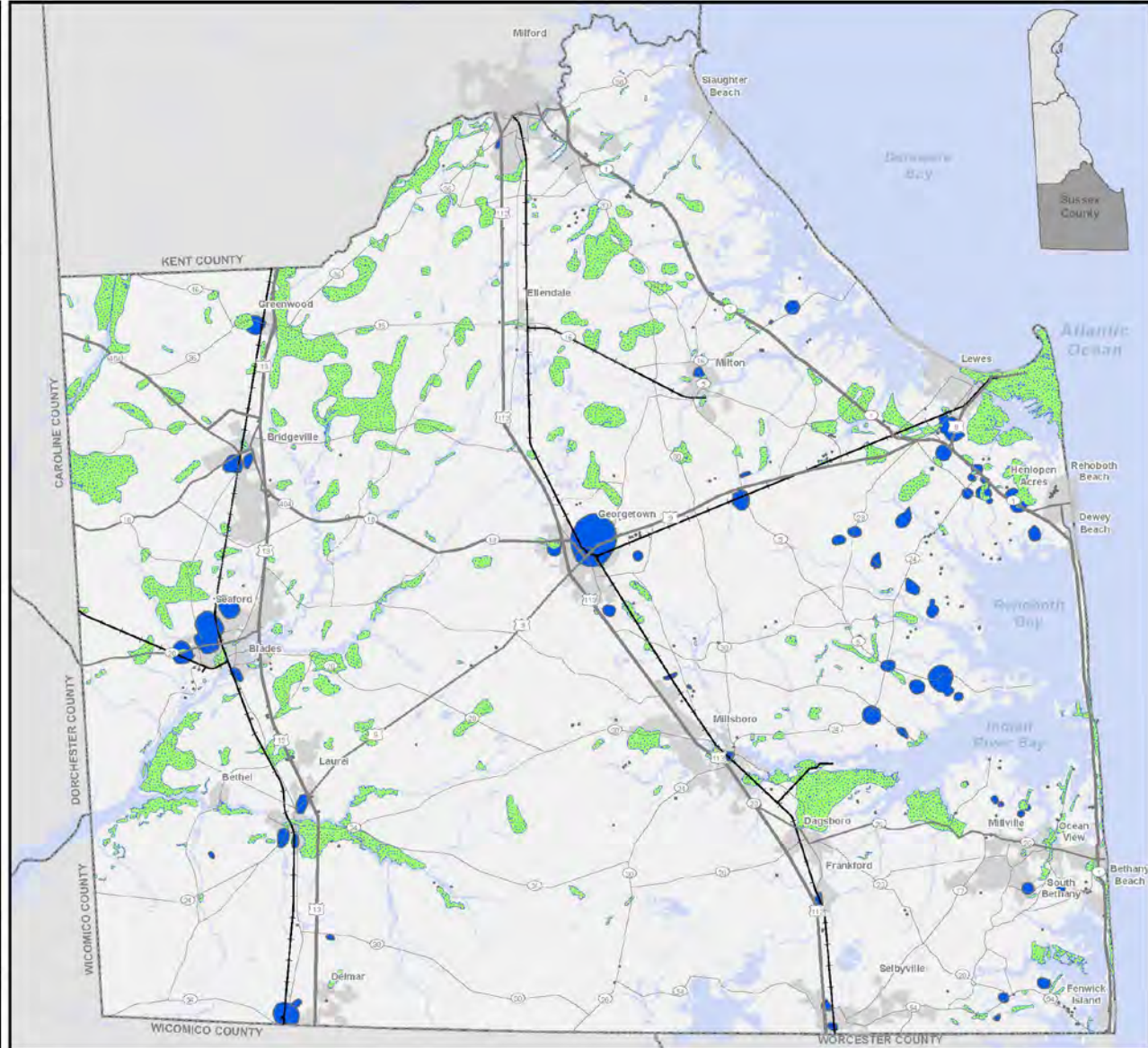
## DRAFT Water Supply, Wellhead & Groundwater Recharge Areas

-  Excellent Recharge Areas
-  Well Head Protection Areas
-  Municipalities
-  Rail Lines
-  County Boundaries
-  Major Rivers
-  Waterbodies

Sources: DE FirstMap, Sussex County Mapping Dept  
DNREC  
Groundwater Recharge Areas Data from 2015



0 2.5 5 Miles



# UTILITIES



Sussex County Aquifers	
Town / Subdivision	Aquifer
Angola	Columbia
Rehobeth / Lewes	Columbia / Manokin
Bethany Bay	Columbia / Manokin / Pocomoke
Bridgeville	Columbia / Cheswold / Frederica
The Meadows	Columbia
Sussex Shores	Columbia / Pocomoke
Town of Bethany Beach	Pocomoke / Manokin
Sea Colony	Manokin
Fenwick Island	Pocomoke
South Bethany	Pocomoke

Source: DNREC Division of Water

Number of Wells by Type	
Well Type	Total
Agricultural - Standard	5301
Agricultural - Within CPCN	5489
Aquifer Storage & Recovery - Standard	1
Dewater - Standard	1718
Domestic - Standard	45186
Fire Protection - Public	1
Fire Protection - Standard	36
Geothermal - Closed Loop	1794
Geothermal - Direct Exchange	1
Geothermal - Recharge	1065
Geothermal - Supply	769
Industrial - Standard	313
Irrigation - Standard	3698
Monitor - Direct Push	778
Monitor - Standard	3913
Monitor - Zone of Interest	72
Observation - Standard	5532
Other - Standard	1431
Public - Miscellaneous	994
Public - Standard	2146
Remediation I - Injection	232
Remediation R - Recovery	50
Soil Borings - Standard	742
Well Construction - Standard	7
<b>Grand Total</b>	<b>81269</b>

Source: DNREC Division of Water



# UTILITIES



Sussex County  
Comprehensive  
Plan

## DRAFT Wastewater Service Areas



Wastewater Facilities

- Rail Lines
- County Boundaries
- Major Rivers
- Waterbodies
- Municipalities

### Wastewater Service Areas that have received CPCNs

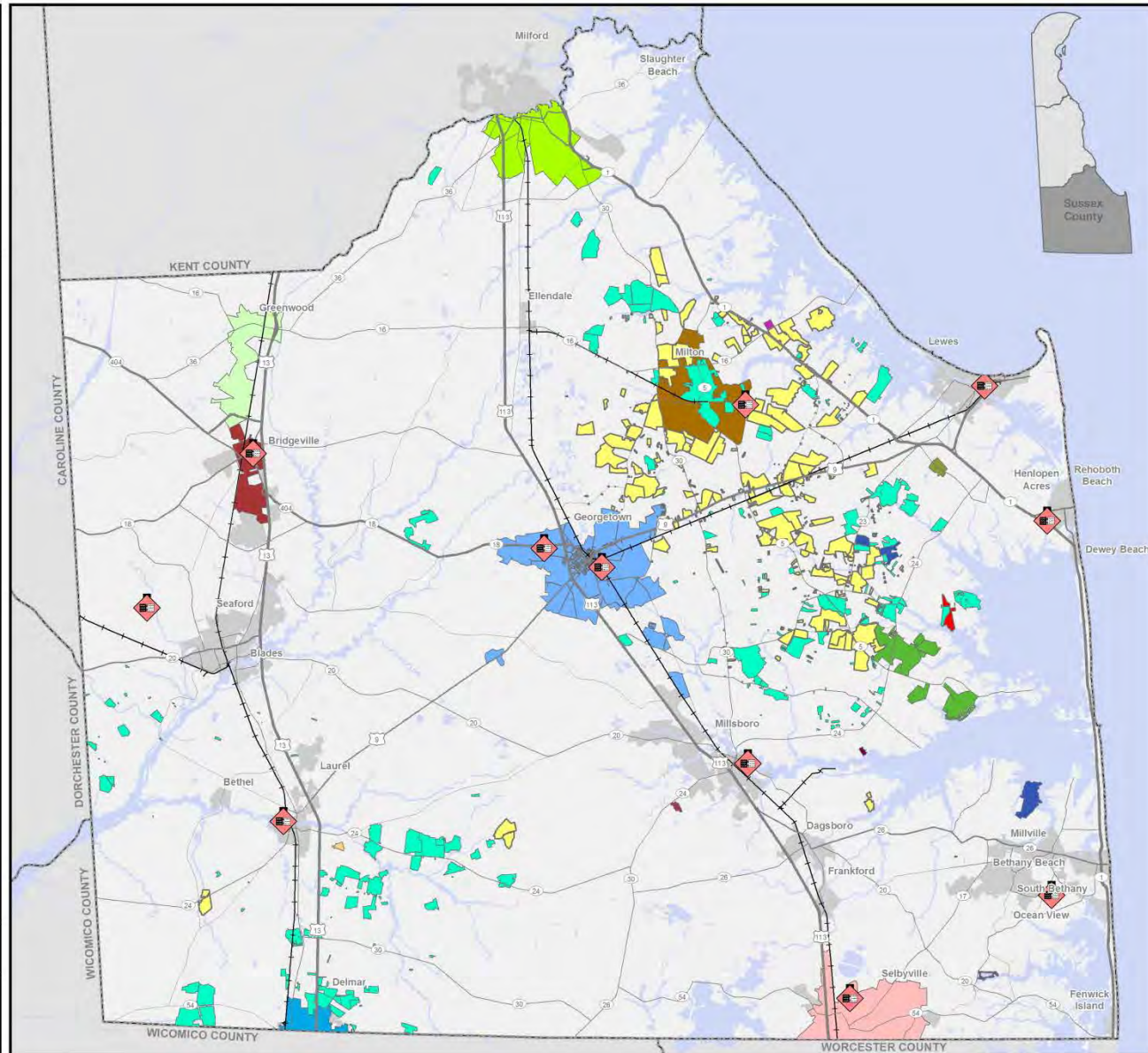
#### Wastewater Utilities

- Abandoned
- Artesian
- Bass Properties, Inc.
- Town of Bridgeville
- Sussex County
- Town of Clayton
- Town of Delmar
- Excel Property Management LLC
- Town of Georgetown
- Town of Greenwood
- City of Harrington
- Inland Bays Preservation Company
- City of Milford
- Town of Milton
- Moore Grant Sanitation, Inc.
- Town of Selbyville
- Tidewater
- The Association of Owners of Gull Point Condominium, Inc.
- The Hamlet at Dirickson Pond LLC
- Utility Systems, Inc.
- Wastewater Utilities, Inc.
- YMG Corporation

Sources: DE FirstMap, Sussex County, DE Public Service Commission  
Wastewater Service Data from 2016



0 2.5 5 Miles





# UTILITIES

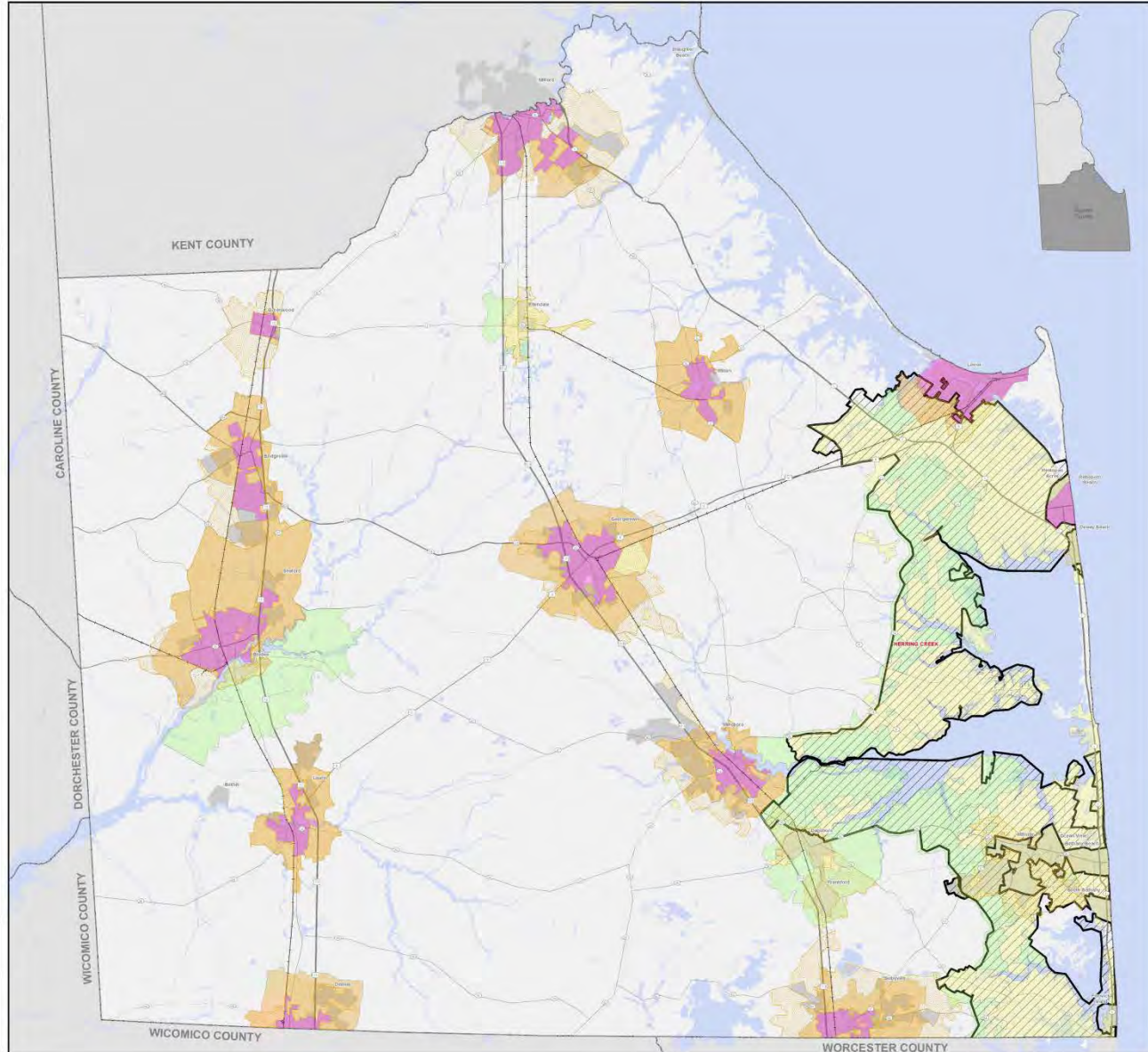


Sussex County  
Comprehensive  
Plan

## DRAFT Sewer Districts and Sewer Service Areas

- Existing County Sewer Districts
- County Sewer Planning Areas
- Municipal Sewer Districts
- Municipal Growth and Annexation Areas
- Town/City Potential Annexation Areas
- Environmentally Sensitive Development Area (ESDA)
- Rail Lines
- County Boundaries
- Major Rivers
- Waterbodies
- Municipalities

Sources: DE FirstMap, Sussex County Mapping Dept.  
ESDA layer from 2008



# UTILITIES



## **Sussex County Wastewater Service Tiers**

### **Tier 1 – Sussex County Unified Sanitary Sewer District**

Areas currently served by County Sewer. Future development to be served by the County.

### **Tier 2 – Sussex County Planning Areas**

Any parcel or parcels immediately adjacent to an existing sanitary sewer district boundary capable of annexation. Areas where the County has plans to install central sewer to serve existing and future development.

### **Tier 3 – Coordinated CPCN Areas**

Areas where multiple existing CPCNs have been issued to various Private Utilities and areas to be served by the County. This area will require coordination between County and the Private Providers. County concurrence letter required for new CPCNs.

### **Tier 4 – System Optional Areas**

Areas where a central utility is desired for any future development, however individual on-site systems will be permitted. The area would primarily be served by Private Utilities, requiring CPCN's to be issued. County requests notification of application for new CPCN.

### **Tier 5 – Regulated On-site Area**

Areas that have been previously sub-divided and open to DNREC approved individually owned on-site systems.

Areas where the Environmental Benefit of centralized sewer does not out-weigh the cost to construct the infrastructure. Open to DNREC approved individually owned on-site systems.

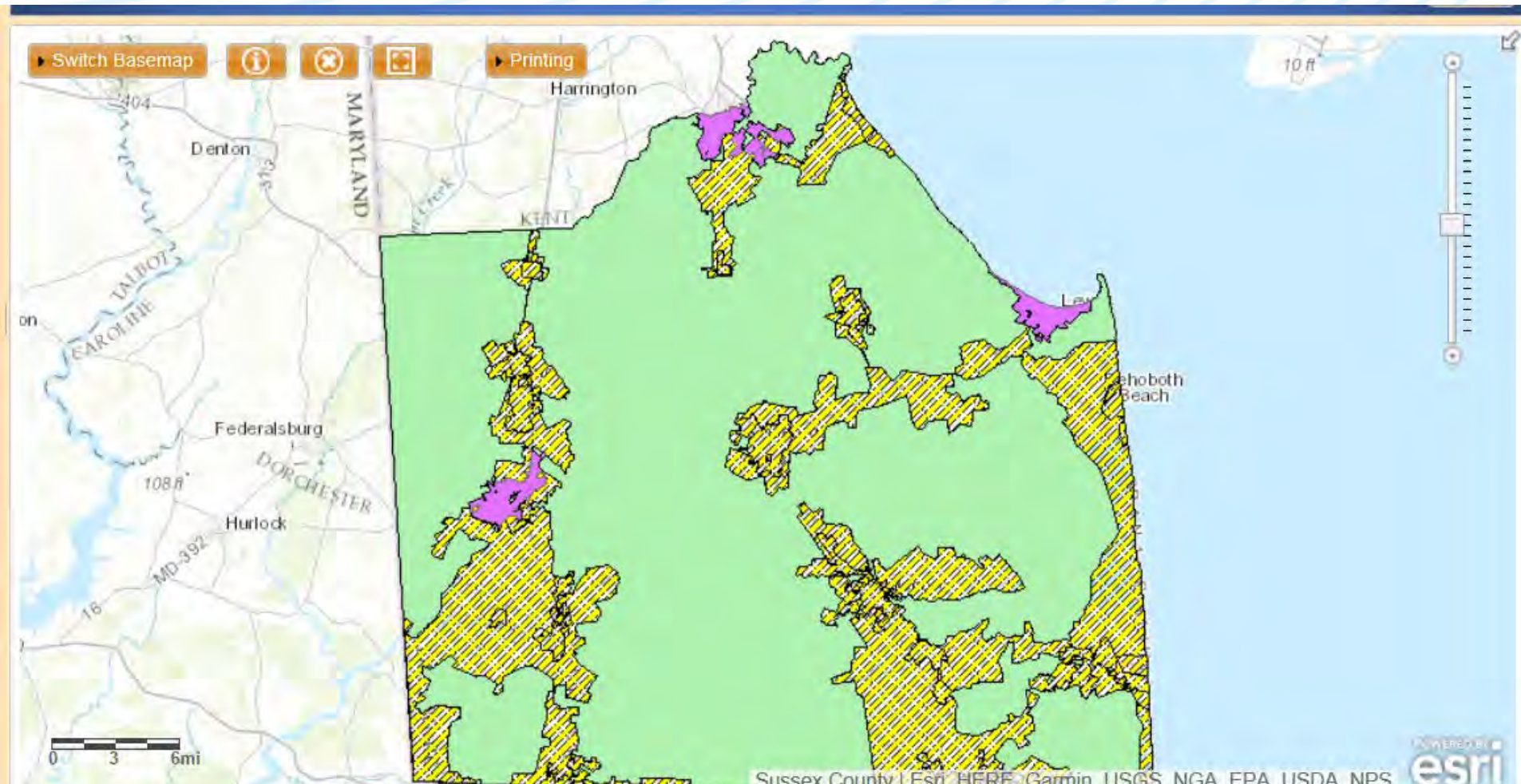
**Areas located in a Municipality's Growth and Annexation area and adjacent to a Sussex County Sanitary Sewer District will be open to discussion with the County and Municipality.**



# UTILITIES

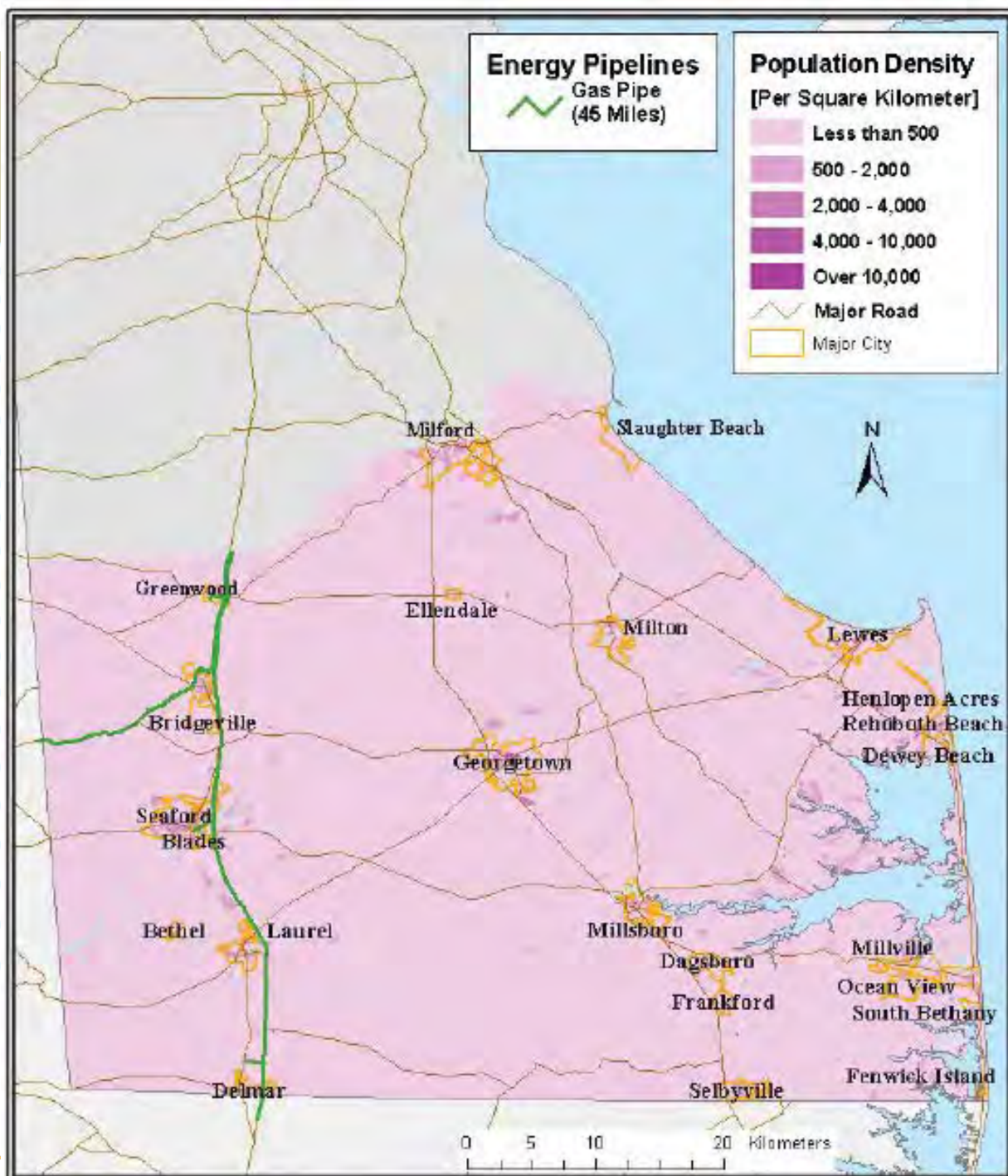


## ▶ Electric Service



# UTILITIES

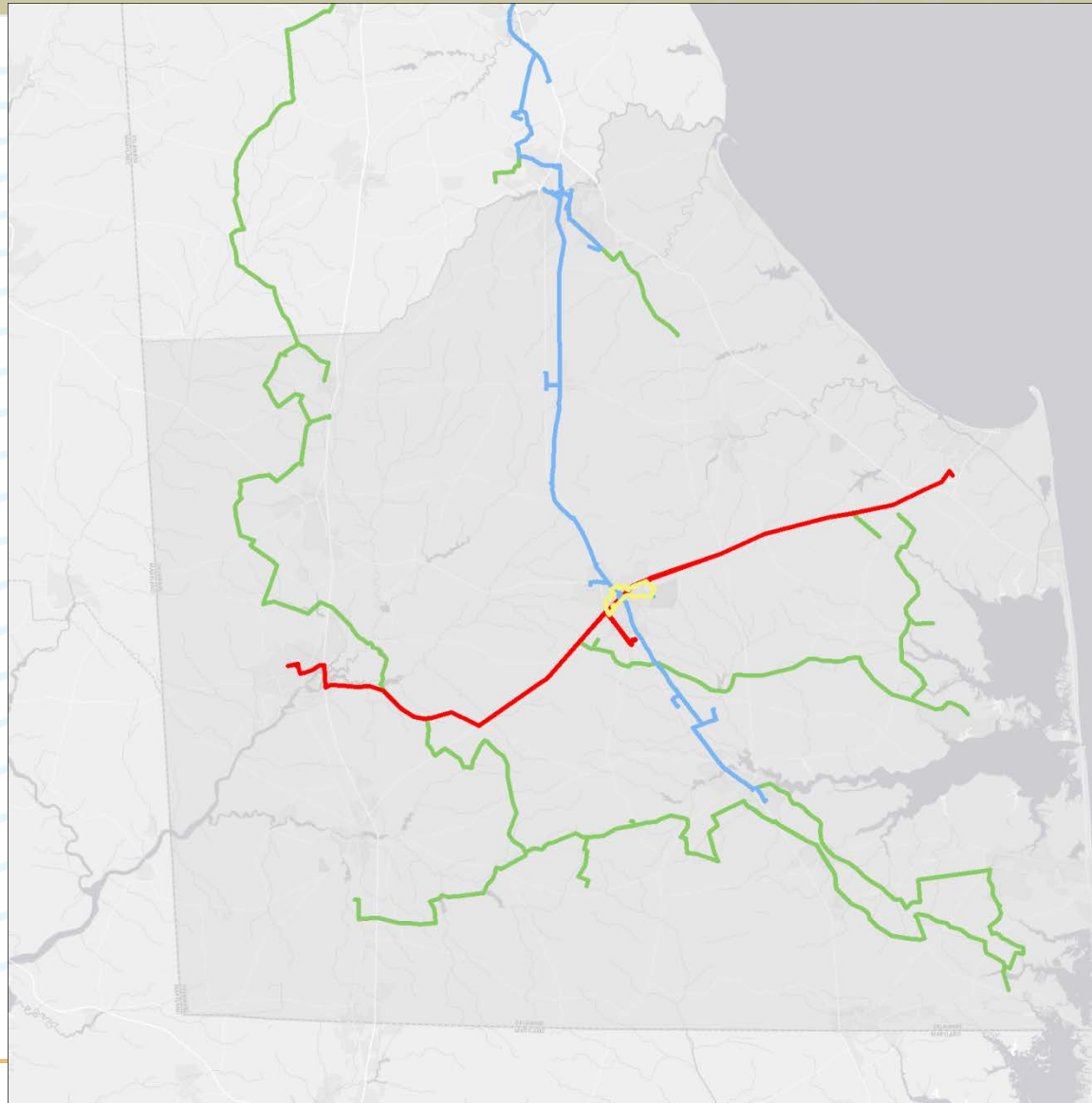
## ► Natural Gas



# UTILITIES



## ► Fiber



**Legend**

- Lighttower Broadband Phase I
- Lighttower All Markets
- Lighttown Construction
- BroadValley Ring



# UTILITIES



## 2008 WASTEWATER TREATMENT STRATEGIES

- ▶ Regarding private sewer treatment providers in officially-designated public sewer service areas:
  - One option would be for Sussex County to control whether private or public providers will serve areas planned for new sewer service within County-designated sewer service areas. To address the highest priority situations, Sussex County could limit this policy to primary service areas (those planned for County sewer service in the immediate future). Alternatively, this policy could be extended to areas intended for longer-term service too.
  - In some cases, the County may end up determining that a private provider can most efficiently serve a particular area. In other cases, the County might determine that service by the County is appropriate, in which case the County could contract with a private service provider to construct and/or operate this new County-owned system.

# UTILITIES



## 2008 WASTEWATER TREATMENT STRATEGIES

- ▶ Regarding private sewer treatment providers in officially-designated public sewer service areas:
  - In some cases, the County could deny private providers the right to provide service in an area where County or municipal service is planned and needed to cost-effectively solve a public health problem. These types of decisions would be subject to a process before the County Engineering Department and County Council. This process could require consideration of cost issues, health concerns, proposed construction timing and other relevant considerations before any decision is made to establish, expand or delay service by a private sewer treatment provider.
  - The intent would be to have any authority apply only within the County's officially designated sewer service areas. County approval of which providers serve areas outside of the sewer service areas is not contemplated. Most of the land area in the County is not within official sewer service areas. The County would like to retain the authority to comment on proposed private service outside County and sewer service areas.

# UTILITIES



## 2008 WASTEWATER TREATMENT STRATEGIES

- ▶ Other Wastewater Treatment Strategies:
  - Sanitary sewer service needs to be coordinated with land use planning and zoning. Most major public sewer improvements should help to direct growth to areas adjacent to or within cities and towns.
  - Sussex County should emphasize providing public sewer service to areas of existing development where there are public health concerns or where central sewer is needed to protect the water quality of the inland bays. Care is needed to avoid large public sewer extensions in undeveloped areas that promote dense new developments in areas with important natural features.

# UTILITIES



## 2008 WASTEWATER TREATMENT STRATEGIES

- ▶ Other Wastewater Treatment Strategies:
  - In cooperation with DNREC, the County and municipalities should investigate use of Rapid Infiltration Basin (RIB) systems. The cost of acquiring land for large spray irrigation fields has greatly increased, because of higher land values. Land can be leased, but then there is not a guarantee of long-term availability. RIB systems can allow the same effluent to be disposed on one-tenth the land conventional spray fields require. However, it would be necessary to address nutrient loadings, and nutrient fate and transport issues. Also, care would be needed to meet TMDL limits established for local waterways. If not properly operated and maintained, RIB systems have a greater threat of groundwater pollution than spray irrigation.



# UTILITIES



## DRAFT 2018 UTILITIES GOALS / OBJECTIVES / STRATEGIES

- ▶ **Goal 8.1 Ensure adequate central sanitary sewer service in a coordinated approach, that anticipates future demand**
  - **Objective 8.1.1 Optimize existing sewer transmission and treatment infrastructure utilization, limiting if possible duplicate infrastructure installation**
    - **Strategy 8.1.1.1** Work with the State Legislature to amend DelCode for optimization of the CPCN process
    - **Strategy 8.1.1.2** Work with the State Legislature to modify CPCN opt-out process to allow establishment of large area franchises encouraging regionalization
    - **Strategy 8.1.1.3** Expand use of public-private and public-public partnerships between wastewater utility providers to avoid duplication of infrastructure
    - **Strategy 8.1.1.4** Work towards regionalization of insularly wastewater services such as biosolids, management, and septic treatment & disposal
    - **Strategy 8.1.1.5** Create public-private partnerships for on-demand disposal of treated effluent (not limited to agricultural lands)

# UTILITIES



## DRAFT 2018 UTILITIES GOALS / OBJECTIVES / STRATEGIES

- ▶ **Goal 8.1 Ensure adequate central sanitary sewer service in a coordinated approach, that anticipates future demand**
  - **Objective 8.1.2 Coordinate the planning and development of public and private wastewater transmission facilities with land use planning to ensure central sewer transmission is available commensurate with land use designation**
    - **Strategy 8.1.2.1** Continue the expansion of the County transmission network to allow movement of wastewater between treatment facilities
    - **Strategy 8.1.2.2** Evaluate the conditional use process for community wastewater system treatment facilities to encourage regionalization
    - **Strategy 8.1.2.3** Expand the County's sewer planning area tier system
    - **Strategy 8.1.2.4** Require County exclusive rights in certain tiers and County approval of private CPCNs in other tiers

# UTILITIES



## DRAFT 2018 UTILITIES GOALS / OBJECTIVES / STRATEGIES

- ▶ **Goal 8.1 Ensure adequate central sanitary sewer service in a coordinated approach, that anticipates future demand**
  - **Objective 8.1.3 Continue to encourage the public petition process initiating conversion of septic to public sewer to replace failing on-site systems or inadequate community sewer facilities**
    - **Strategy 8.1.3.1** Work with DNREC to refine the onsite inspection and remediation process to work in coordination with County sewer expansion goals

# UTILITIES



## DRAFT 2018 UTILITIES GOALS / OBJECTIVES / STRATEGIES

- ▶ **Goal 8.1 Ensure adequate central sanitary sewer service in a coordinated approach, that anticipates future demand**
  - **Objective 8.1.4 Continually maintain and upgrade existing sewer infrastructure to ensure sound operation**
    - **Strategy 8.1.4.1** Explore new technologies for wastewater treatment and disposal
    - **Strategy 8.1.4.2** Engage in partnerships with the state for conversion of public lands to allow multi-use purpose systems (for example wastewater effluent disposal/park-with limited public access)



# UTILITIES



## DRAFT 2018 UTILITIES GOALS / OBJECTIVES / STRATEGIES

- ▶ **Goal 8.1 Ensure adequate central sanitary sewer service in a coordinated approach, that anticipates future demand**
  - **Objective 8.1.5 Coordinate wastewater planning with land use planning to accommodate growth**
    - **Strategy 8.1.5.1 Encourage or require private wastewater utility providers to create transmission networks connecting demand with treatment and disposal sites**

# UTILITIES



## DRAFT 2018 UTILITIES GOALS / OBJECTIVES / STRATEGIES

- ▶ **Goal 8.2 Ensure that a safe and adequate water supply is available to meet the needs of future demand**
  - **Objective 8.2.1 Protect water supply quality and quantity**
    - **Strategy 8.2.1.1** Consider development of a process for mandatory Countywide onsite wastewater inspections upon transfer in watersheds with promulgated TMDLs for nutrient impairment
    - **Strategy 8.2.1.2** Protect long-term water supply by encouraging land conservation in water recharge areas
    - **Strategy 8.2.1.3** Determine if a review of the existing County wellhead protection ordinance is needed to strengthen it
    - **Strategy 8.2.1.4** Consider review of County code to determine if measures should be added regulating uses of underground storage tanks in groundwater recharge areas

# UTILITIES



## 2008 WATER SUPPLY STRATEGIES

- ▶ The following strategies will aid in ensuring more safe water supplies are available in those areas of Sussex County served by central water systems:
  - More effective ordinances need to be adopted and enforced by Sussex County and the incorporated municipalities to minimize hazards to public water supply wells.
  - Water supply planning needs to be more closely coordinated with sewage treatment and land use planning.
  - Great care should be used in allowing intensive development in areas that are likely to be needed in the future for additional groundwater supplies.

# UTILITIES



## 2008 WATER SUPPLY STRATEGIES

- ▶ The following strategies will aid in ensuring more safe water supplies are available in those areas of Sussex County served by central water systems:
  - Water systems should have a back-up source, such as an additional well that is not needed for normal demand or an emergency interconnection with another water supplier that has surplus capacity. This is important to ensure water supplies are available without interruption in case one well becomes contaminated.
  - The quality of groundwater should be more extensively monitored to identify contaminants before these contaminants reach public water supply wells, and to measure movement of known contaminants.



# UTILITIES



## DRAFT 2018 UTILITIES GOALS / OBJECTIVES / STRATEGIES

- ▶ **Goal 8.2 Ensure that a safe and adequate water supply is available to meet the needs of future demand**
  - **Objective 8.2.2 Eliminate any single point-of-failure delivery systems to ensure that water supplies are available without interruption**
    - **Strategy 8.2.2.1** Require interconnections between water systems whenever technically feasible
    - **Strategy 8.2.2.2** Encourage regionalization of utility providers

# UTILITIES



## DRAFT 2018 UTILITIES GOALS / OBJECTIVES / STRATEGIES

- ▶ **Goal 8.3 Meet the future energy demand (electricity, natural gas) as the Sussex County population continues to grow**
  - **Objective 8.3.1 Coordinate with energy service providers as they make improvements to and extend service based on market demand and market analysis**
    - **Strategy 8.3.1.1** Coordinate with and provide technical assistance to energy providers as they work to extend services to Sussex County residents
  - **Objective 8.3.2 Promote the utilization of existing transmission infrastructure to the fullest capacity**
    - **Strategy 8.3.2.1** Encourage dual-feed whenever critically required (for example providing backup power for hospitals and other life safety operations)

# UTILITIES



## DRAFT 2018 UTILITIES GOALS / OBJECTIVES / STRATEGIES

- ▶ **Goal 8.3 Meet the future energy demand (electricity, natural gas) as the Sussex County population continues to grow**
  - **Objective 8.3.3 Encourage energy conservation in order to increase reliability of the grid**
    - **Strategy 8.3.3.1** Consider reductions in building permit fees to homes that go above and beyond the energy code requirements
  - **Objective 8.3.4 Encourage renewable energy options**
    - **Strategy 8.3.4.1** Encourage renewable energy sources from a utility level standpoint and not a scattered approach

# UTILITIES



## DRAFT 2018 UTILITIES GOALS / OBJECTIVES / STRATEGIES

- ▶ **Goal 8.4 Ensure adequate drainage and management of stormwater**
  - **Objective 8.4.1 Support State and Sussex Conservation District stormwater management efforts**
    - **Strategy 8.4.1.1** Continue participation in the stormwater regulatory advisory process with the State for the development of new stormwater regulations
    - **Strategy 8.4.1.2** Support the Sussex Conservation District in the management and implementation of the State wide stormwater regulations
  - **Objective 8.4.2 Encourage site design that maximizes or optimizes infiltration and minimizes stormwater runoff**
    - **Strategy 8.4.2.1** Consider working with stakeholders to develop buffer incentives or a program



# UTILITIES



## DRAFT 2018 UTILITIES GOALS / OBJECTIVES / STRATEGIES

- ▶ **Goal 8.5 Ensure adequate telecommunications coverage (e.g. internet, cable, cellular service) throughout the County to meet the needs of the County's residents**
  - **Objective 8.5.1 Encourage the expansion of telecommunications services as technology, market demand, and return on investment allows**
    - **Strategy 8.5.1.1** Coordinate with and provide technical assistance to telecommunications providers as they work to extend services to Sussex County residents

# UTILITIES



## DRAFT 2018 UTILITIES GOALS / OBJECTIVES / STRATEGIES

- ▶ **Goal 8.6 Support waste reduction and recycling efforts in the County**
  - **Objective 8.6.1 Continue support of DNREC and the Delaware Solid Waste Authority's waste management and disposal efforts to ensure adequate services for solid waste and recycling**
    - **Strategy 8.6.1.1** Include siting for recycling containers in land use approvals on controlled sites to avoid illegal dumping
    - **Strategy 8.6.1.2** Revise County codes to include conditional use approvals for recycling processors in the County
    - **Strategy 8.6.1.3** Develop citing criteria for County code regarding hazardous waste and waste-to-energy (incinerator) facilities
    - **Strategy 8.6.1.4** Consider revising the major land subdivision approval process so that requires homeowners associations to select a single waste hauler provider when they set up their HOA bylaws
    - **Strategy 8.6.1.5** Work with the Delaware Solid Waste Authority to identify future transfer sites in the County

# PUBLIC WORKSHOPS



# PUBLIC WORKSHOPS



## ▶ Round II Public Meetings

### ◦ Schedule and Locations:

- Monday May 1<sup>st</sup> at the Laurel Fire Hall
- Tuesday May 2<sup>nd</sup> at the Cheer Center in Georgetown
- Wednesday May 3<sup>rd</sup> at the Frankford Fire Hall
- Wednesday May 10<sup>th</sup> at the Milford Senior Center
- Tuesday May 16<sup>th</sup> at the Beacon Middle School

### ◦ Time

### ◦ Format

- 1<sup>st</sup> hour
  - Public arriving
  - Sign-in
  - open house
- Remainder: Presentation
  - What we know (data)
  - What we heard (public)
  - Draft goals and objectives
  - Alternative futures
- Q&A



end