

Mobility Element of the Sussex County Comprehensive Plan Update

September 25 and 26, 2007



What is a Transportation Plan?

Introduction

Trends

Problem Areas & Projects

Implications

Issues, Strategies, Actions

Conclusion

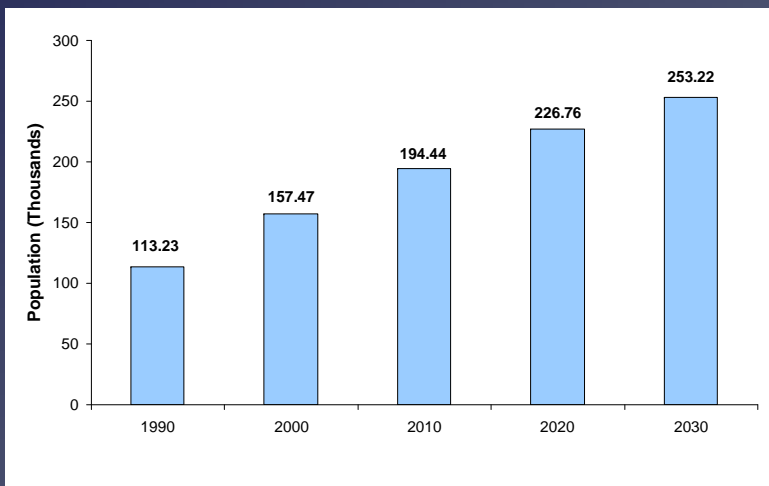
- Provides Mobility Element of County Comprehensive Plan
- Sets the direction for DeIDOT's decision-making
- Addresses multimodal transportation needs
 - Update required every four years

Ultimately, the purpose of the Transportation Plan is to strengthen the links between land use and transportation planning

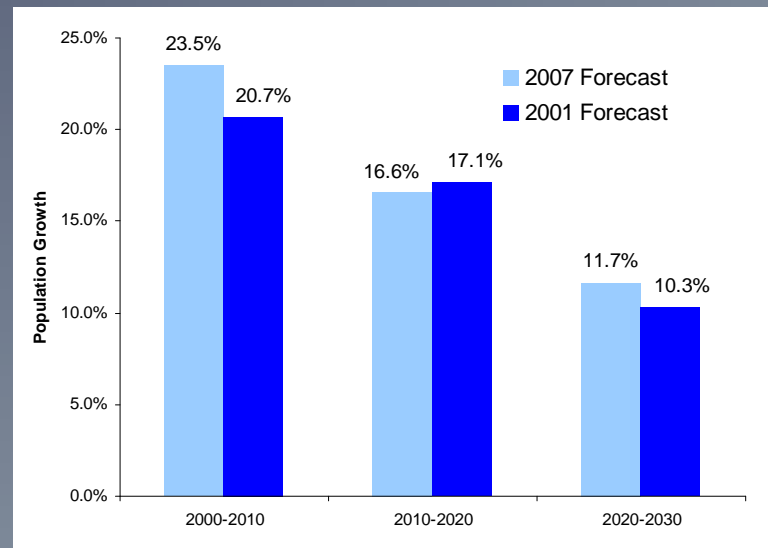
Population Growth

- Introduction
- Trends
- Problem Areas & Projects
- Implications
- Issues, Strategies, Actions
- Conclusion

Population Growth



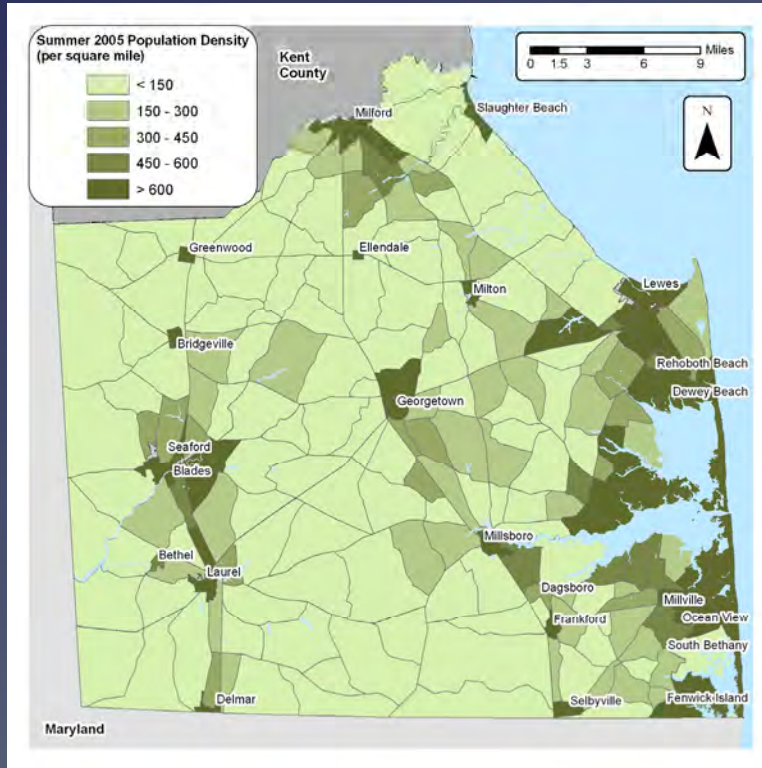
Population Growth Rate



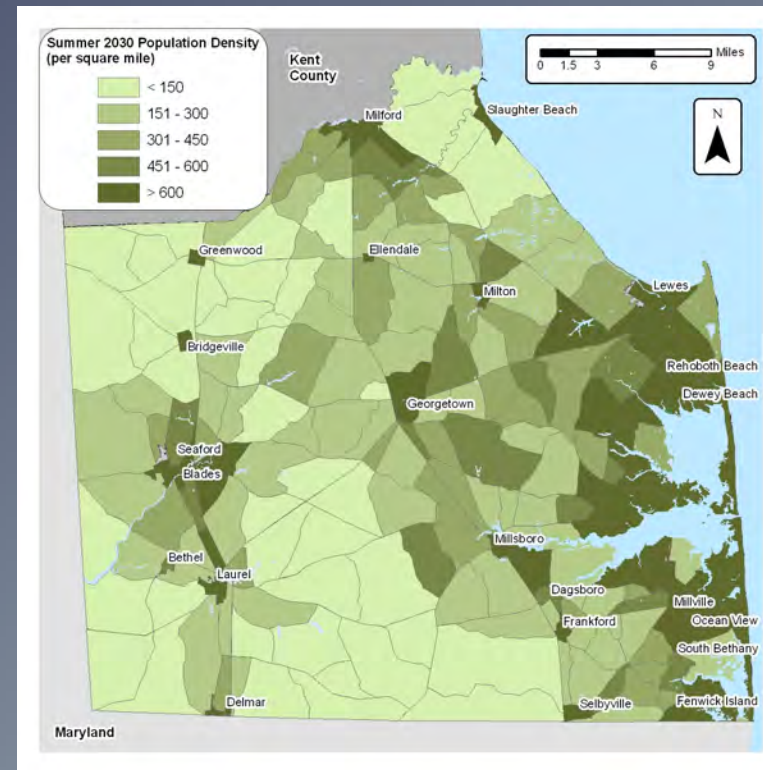
Sources: Delaware Population Consortium,
US Census Bureau

Summer Population

Summer Population
Density 2005



Summer Population
Density 2030



Sources: Delaware Population Consortium,
US Census Bureau

Introduction

Trends

Problem
Areas
& Projects

Implications

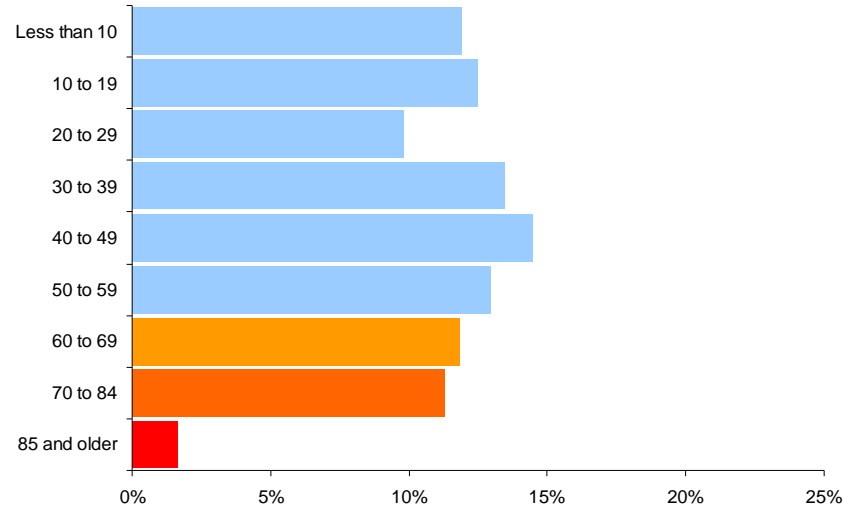
Issues,
Strategies,
Actions

Conclusion

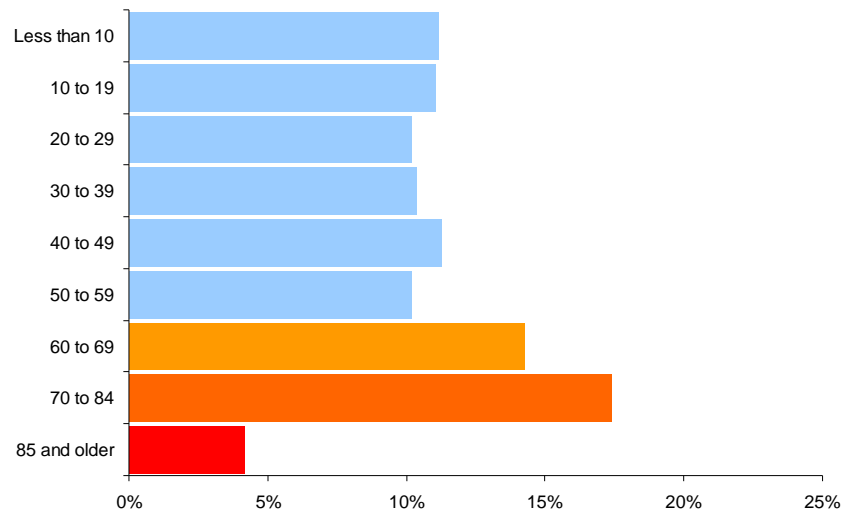
Aging Population

- Introduction
- Trends
- Problem Areas & Projects
- Implications
- Issues, Strategies, Actions
- Conclusion

Age Distribution in 2000



Age Distribution in 2030



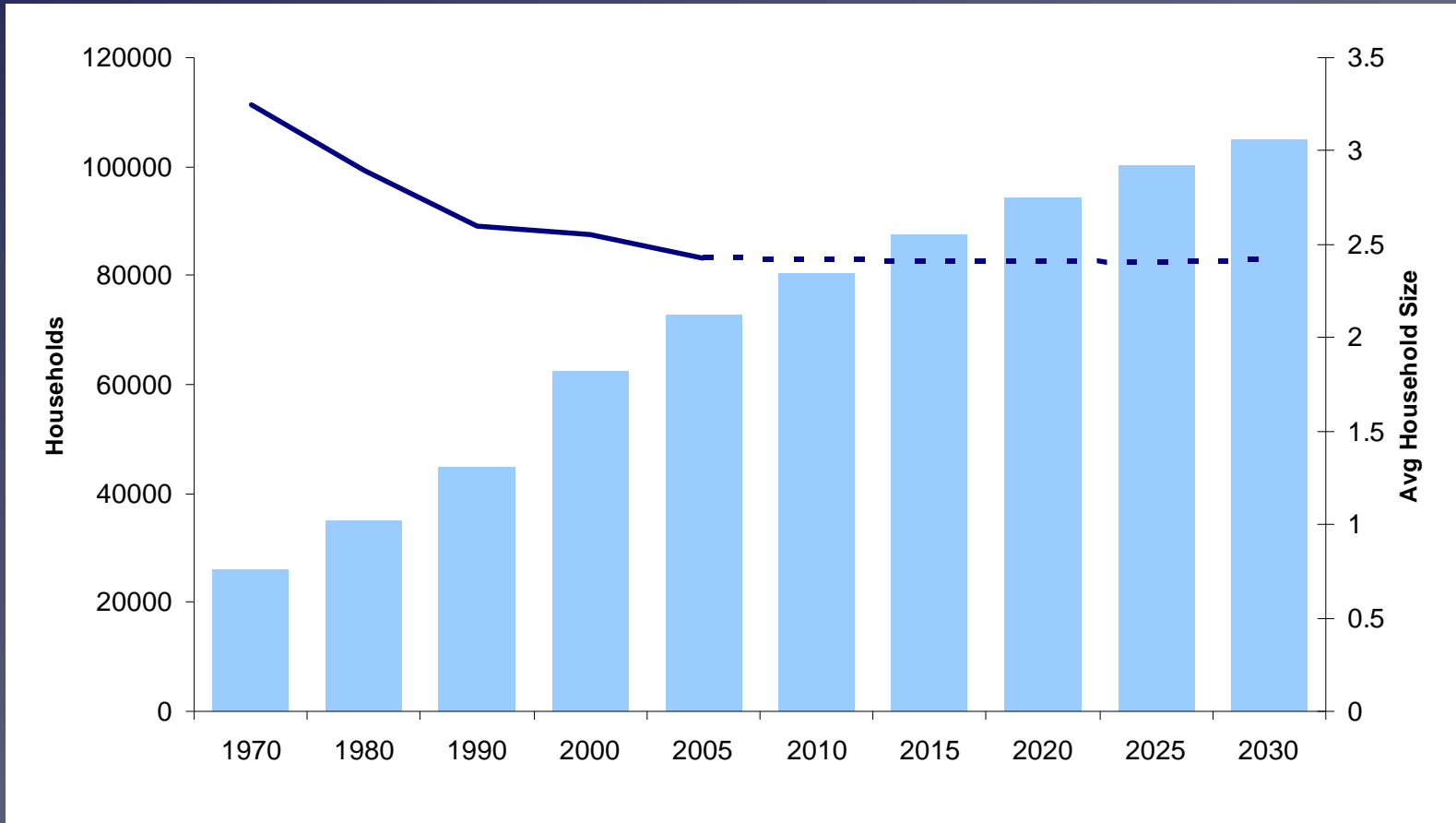
From 2000 to 2030:

- 60 to 69 share grows by 20%
- 75 to 84 share grows by 54%
- 85+ share grows by 149%

Sources: Delaware Population Consortium, US Census Bureau

Shrinking Household Size

Number of Households and Household Size



Sources: Delaware Population Consortium, US Census Bureau

From 2000 to 2030, household size decreased by 26%, which requires 34% more houses to hold the same number of people.

Employment Growth

Introduction

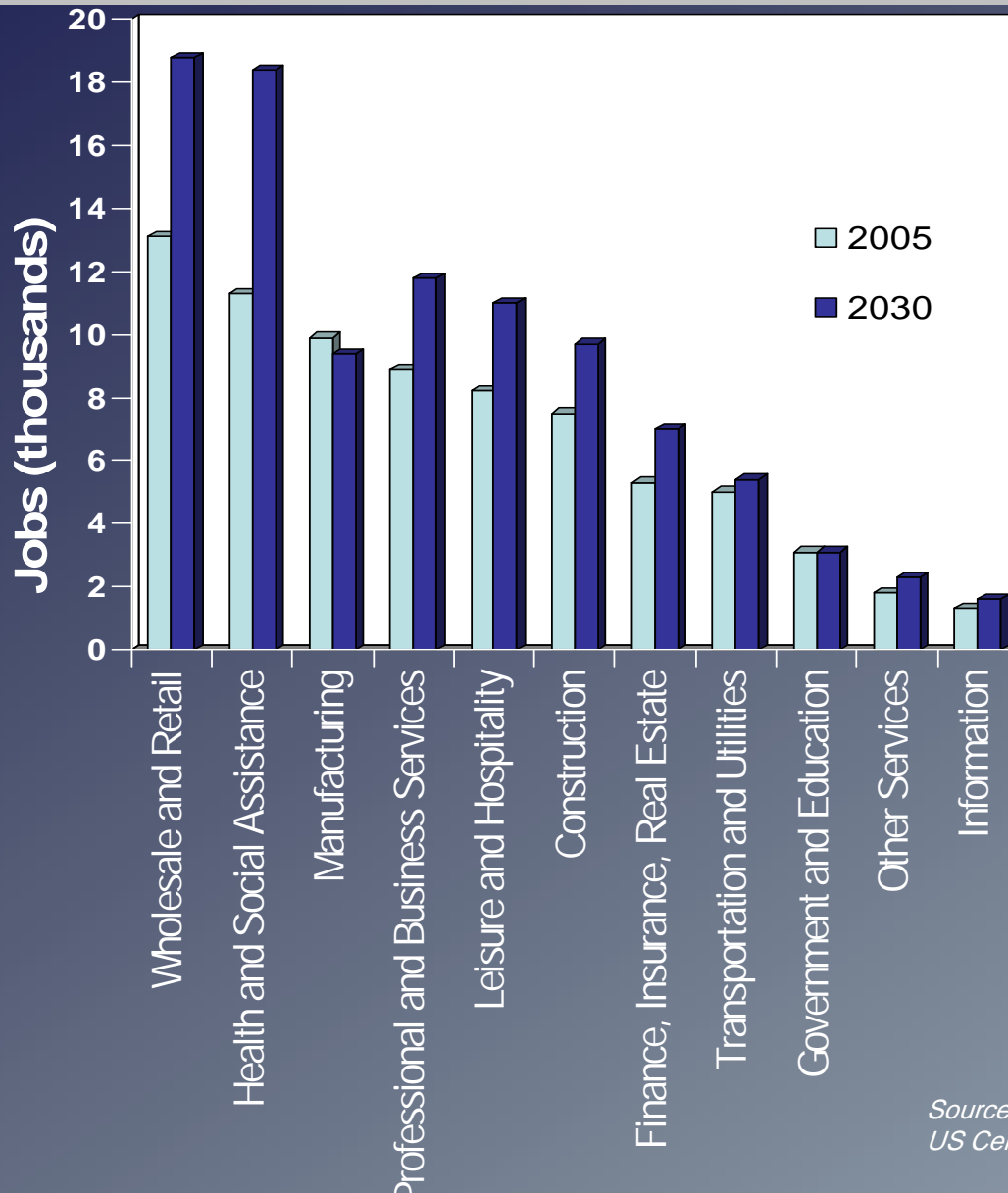
Trends

Problem
Areas
& Projects

Implications

Issues,
Strategies,
Actions

Conclusion



Employment
Growth

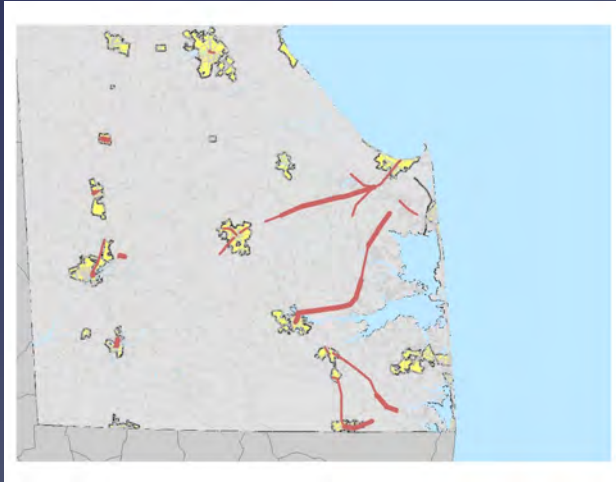
by Industry

2005-2030

Roadway Use

Current Roadway Congestion

2005



Projected Roadway Congestion

2030



Summer



Summer

Problem Areas – 2001 Transportation Plan

Introduction

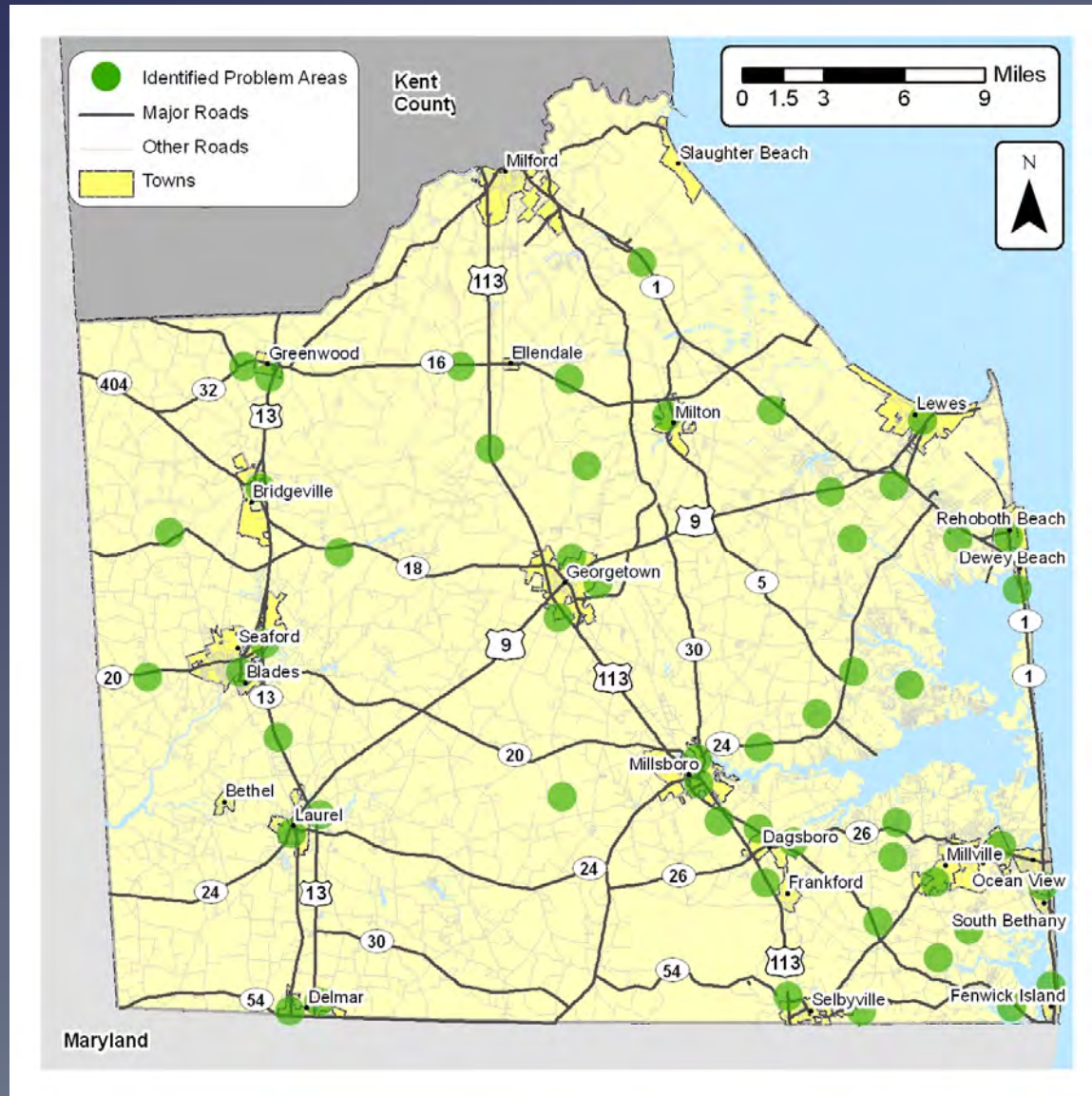
Trends

Problem
Areas
& Projects

Implications

Issues,
Strategies,
Actions

Conclusion



DeIDOT Projects – 2008 Capital Transportation Program

Introduction

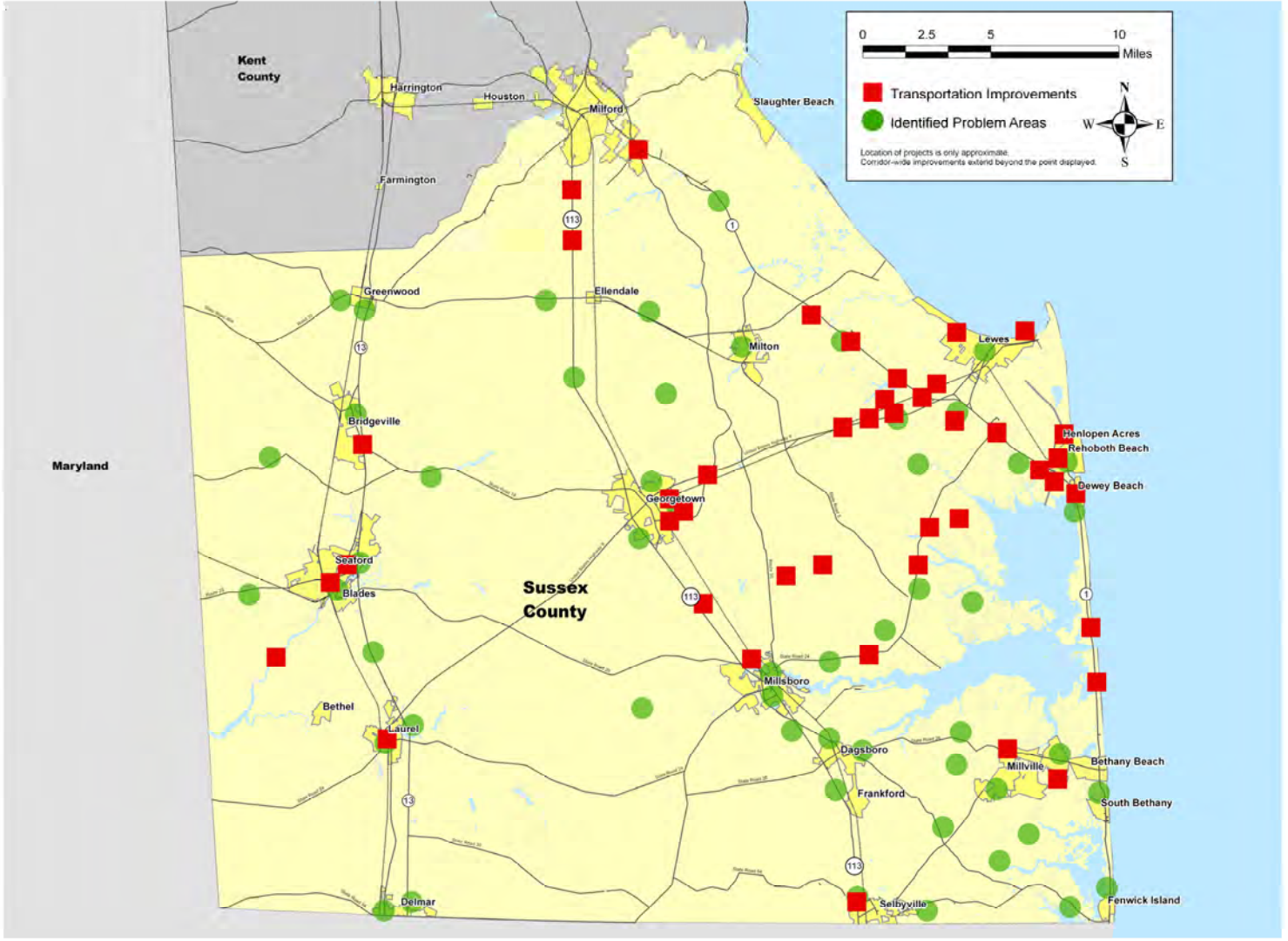
Trends

Problem
Areas
& Projects

Implications

Issues,
Strategies,
Actions

Conclusion



Issues, Strategies, and Actions

Introduction

Trends

Problem
Areas
& Projects

Implications

Issues,
Strategies,
Actions

Conclusion

1. Address East-West Movement

- Complete improvements to major east-west routes, consider bypasses for towns most affected by tourist or heavy truck traffic

2. Address North-South Movement

- Preserve and increase capacity on existing major north-south routes while pursuing plans for a north-south limited access highway on existing or new alignments

Issues, Strategies, and Actions

Introduction

Trends

Problem
Areas
& Projects

Implications

Issues,
Strategies,
Actions

Conclusion

3. Provide for Evacuation Routes

- Many residents are unaware of existing evacuation plans. The perception exists that current evacuation routes become easily congested and are prone to flooding in severe storms

4. Implement Coordinated Public Transportation Services

- Create a mechanism that will enable providers to exchange information to provide an improved level of mobility for human services transportation users

Issues, Strategies, and Actions

5. Expand Travel Alternatives

- Expand travel alternatives beyond the automobile to provide a comprehensive, interconnected transportation system throughout the County

6. Improve Intergovernmental Coordination

- Strengthen communication and coordination among municipal, county, state, and federal governments in order to maintain an efficient transportation infrastructure

Introduction

Trends

Problem
Areas
& Projects

Implications

Issues,
Strategies,
Actions

Conclusion

Issues, Strategies, and Actions

Introduction

Trends

Problem
Areas
& Projects

Implications

Issues,
Strategies,
Actions

Conclusion

7. Improve Air Quality

- The County should consider strategies to improve its air quality and be prepared for county-wide emission testing

8. Sub-Area Planning

- Encourage better coordinated planning between and among county, state and local governments to preserve agriculture, protect waterways, demonstrate conservation in community design, promote interconnectivity, and enhance overall quality of life

Themes and Next Steps

Introduction

- Funding requirements need to be estimated and sources found

Trends

- Priorities:

- DeIDOT: major roads, arterials

- Municipalities, Developers: local roads

Problem
Areas
& Projects

- Focus on sub-area plans, including transportation, sewer, storm water

Implications

- Hold another round of public meetings Fall 2007

- Reprioritization of projects, schedules

- Completion of Transportation Plan and Mobility Element, continue implementing projects

Issues,
Strategies,
Actions

Conclusion

For Additional Information

Introduction

Trends

Problem
Areas
& Projects

Implications

Issues,
Strategies,
Actions

Conclusion

- Contact:

Bobbie Geier

DeIDOT

P.O. Box 778

Dover, DE 19903

302-760-2119

Roberta.Geier@state.de.us