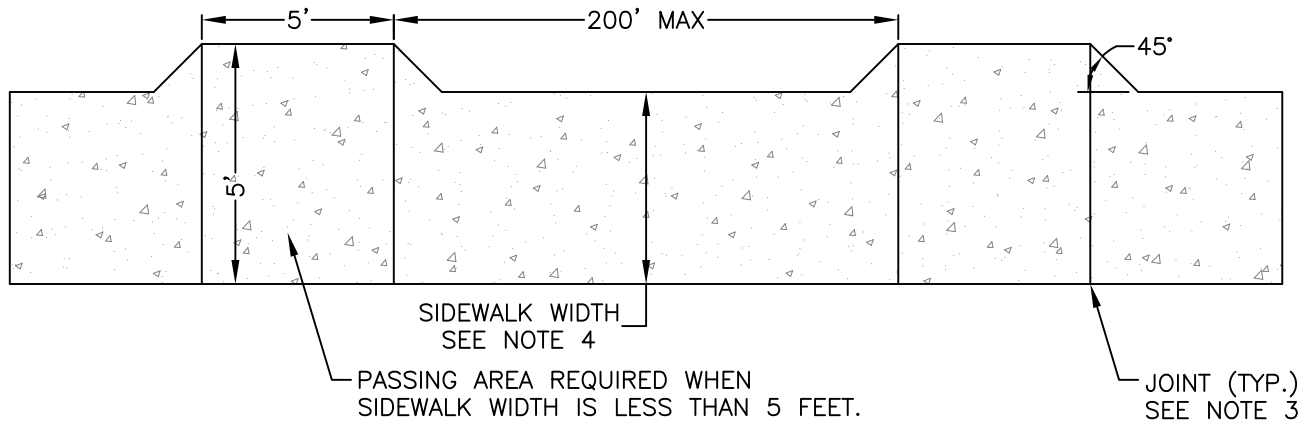
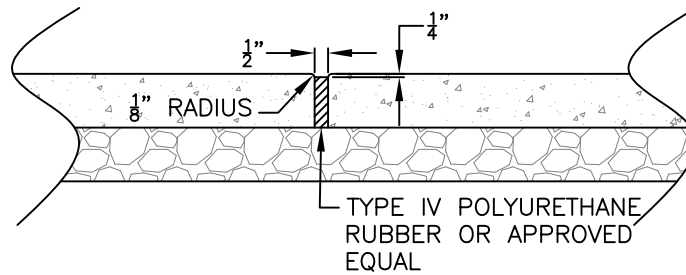


SECTION



PLAN



EXPANSION JOINT

NOTES

1. CONCRETE SIDEWALKS SHALL BE CONTINUOUS AND SHALL NOT BREAK OR STOP AT PROPERTY ACCESS POINTS.
2. STANDARD SIDEWALK WIDTH IS 5 FEET. IN AREAS WHERE A 5-FOOT SIDEWALK CANNOT BE ACCOMMODATED DUE TO SITE CONSTRAINTS, THE WIDTH MAY BE REDUCED TO 4 FEET WITH PASSING AREAS INCORPORATED AT 200' MAXIMUM INTERVALS PER THE ABOVE DETAIL.
3. JOINTS SHALL BE INCORPORATED ACROSS FULL WIDTH OF A CONTIGUOUS RUN OF CONCRETE SIDEWALK AS FOLLOWS:
 - CONSTRUCTION JOINTS BY SAW OR TOOL CUTTING AT 5-FOOT INTERVALS AT A DEPTH OF 1-INCH AND A MAXIMUM WIDTH OF ONE-HALF INCH
 - EXPANSION JOINTS PER THE ABOVE DETAIL AT 20-FOOT MAXIMUM INTERVALS
4. WHITE CURING COMPOUND SHALL BE APPLIED TO CONCRETE SIDEWALK INCLUDING EXPOSED EDGES PER DELDOT SPECIFICATIONS IMMEDIATELY FOLLOWING SURFACE TEXTURING.
5. WHEN CONCRETE SIDEWALK IS SITUATED ALONG THE BACKSIDE OF CONCRETE CURBING, TYPE IV POLYURETHANE RUBBER EXPANSION POINT SHALL BE INSTALLED BETWEEN SIDEWALK AND CURBING.
6. FOR SIDEWALKS ADJACENT TO OR AT ENTRANCES OF BUILDINGS, REFER TO THE LATEST VERSION OF THE AMERICANS WITH DISABILITIES ACCESSIBILITY GUIDELINES.
7. FOR SIDEWALKS WITHIN OR ADJACENT TO CURB RAMP, REFER TO THE LATEST VERSION OF DELDOT'S PEDESTRIAN ACCESSIBILITY STANDARDS AND/OR STANDARD CONSTRUCTION DETAILS.



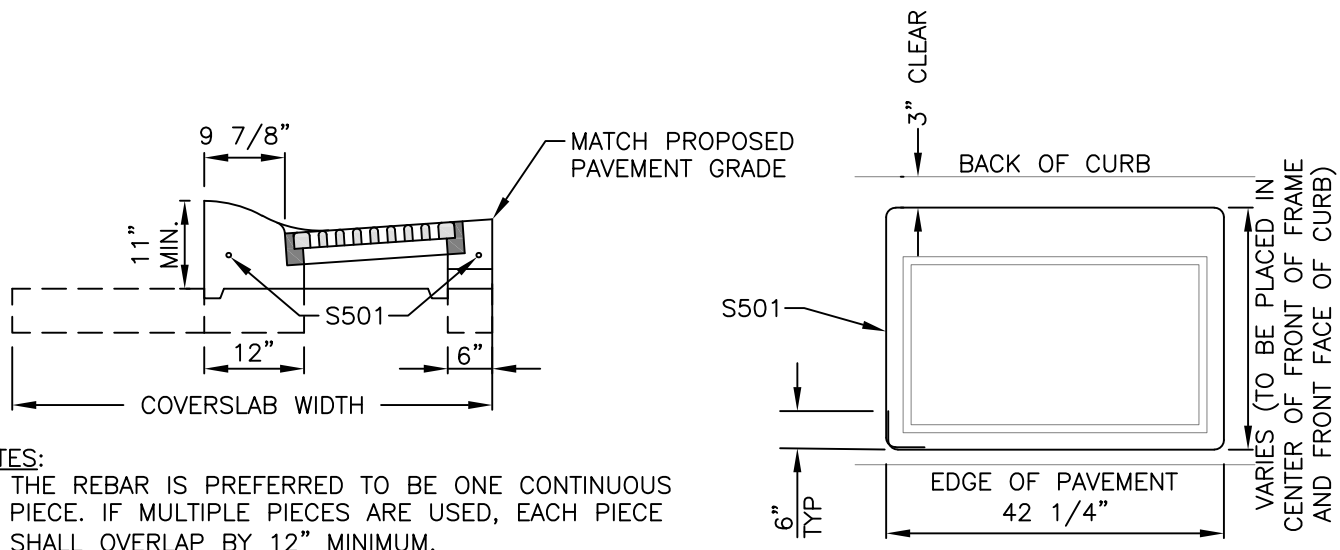
SUSSEX COUNTY
ENGINEERING DEPARTMENT

APPROVED: *[Signature]*
SUSSEX COUNTY ENGINEER

CONCRETE SIDEWALK

DETAIL
M-1

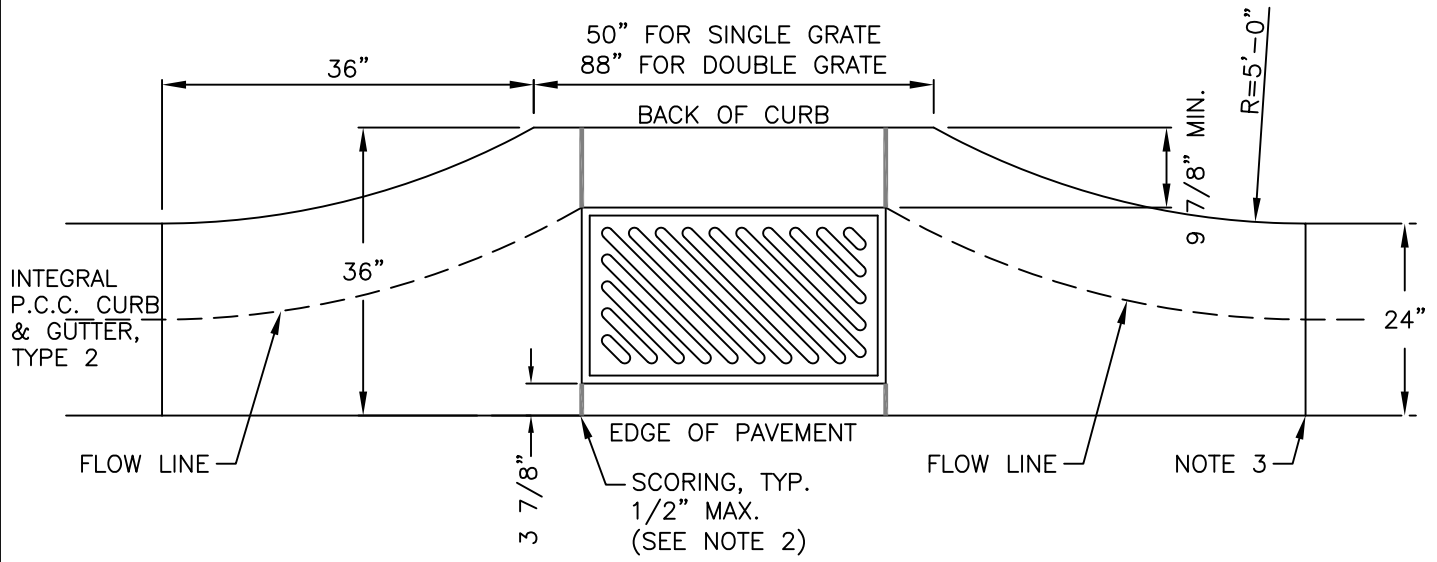
LAST REVISED:
6/30/2022



- NOTES:**
1. THE REBAR IS PREFERRED TO BE ONE CONTINUOUS PIECE. IF MULTIPLE PIECES ARE USED, EACH PIECE SHALL OVERLAP BY 12" MINIMUM.
 2. WHEN FRAME AND GRATE IS BEING SET TO FINAL GRADE, CAST IN PLACE CONCRETE MUST BE USED TO SUPPORT THE FRAME.

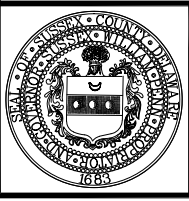
SECTION

S501 BENDING DIAGRAM
 #5 REBAR (5/8") TO BE CONTINUOUS OR WITH 12" OVERLAP BETWEEN BARS.



PLAN

- NOTES**
1. THIS DETAIL REPRESENTS A MODIFICATION TO DELDOT'S DRAINAGE INLET TOP UNIT TYPE D STANDARD, AND SHALL BE INCORPORATED IN SUBDIVISION DESIGN AS APPROPRIATE.
 2. ON DOUBLE INLET GRATES, THE MIDPOINT SHALL BE SCORED IN BETWEEN THE GRATES, FRONT AND BACK.
 3. USE TYPE IV POLYURETHANE RUBBER FOR EXPANSION JOINT ON BOTH SIDES OF A STRUCTURE. REFER ALSO TO DETAIL M-1.
 4. WHITE CURING COMPOUND SHALL BE APPLIED TO CONCRETE CURB INCLUDING EXPOSED EDGES PER DELDOT SPECIFICATIONS.



SUSSEX COUNTY
 ENGINEERING DEPARTMENT

APPROVED: *[Signature]*
 SUSSEX COUNTY ENGINEER

**DRAINAGE INLET TOP UNIT
 TYPE D-MODIFIED**

DETAIL
 M-2

DATE ISSUED:
 6/30/2022