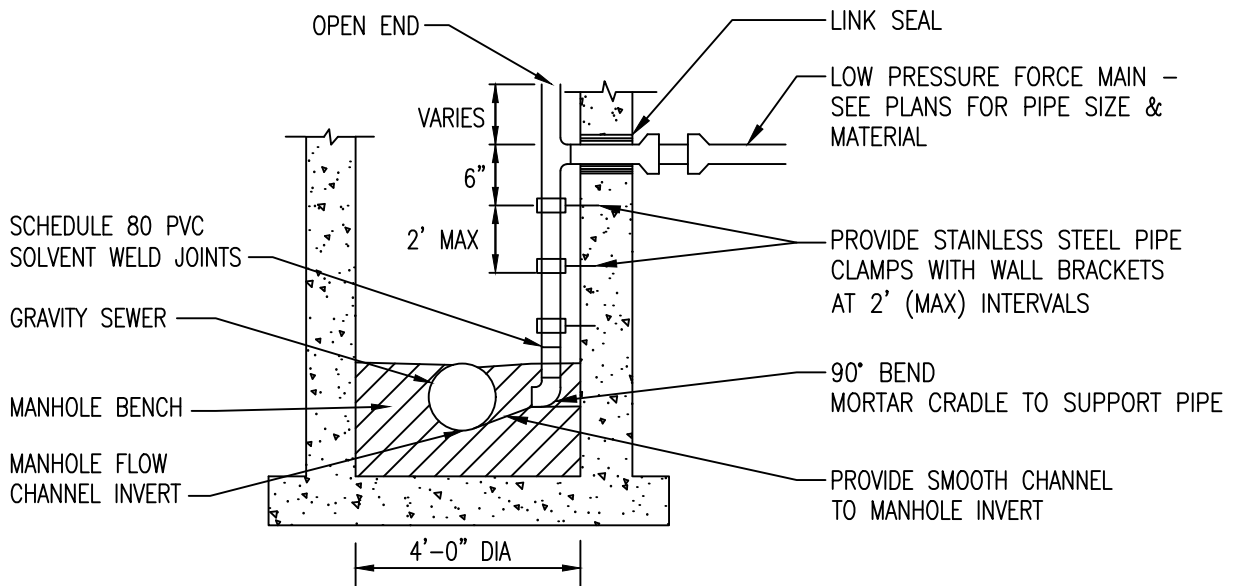


MANHOLE CONNECTION



NOTES:

1. CONNECTION CONFIGURATION ONLY APPLICABLE TO LOW PRESSURE SYSTEM CONNECTING INTO EXISTING MANHOLE. FOR NEW CONSTRUCTION, REFER TO DETAIL S-1.07.
2. COAT INTERIOR SURFACES OF MANHOLE WITH AMINE CURED EPOXY TWO (2) COATS 16.0 TO 24.0 MIL TOTAL.



SUSSEX COUNTY  
ENGINEERING DEPARTMENT

APPROVED: *[Signature]*  
SUSSEX COUNTY ENGINEER

LOW PRESSURE  
FORCE MAIN DISCHARGE

DETAIL  
S-1.08

DATE ISSUED:  
12/30/2021