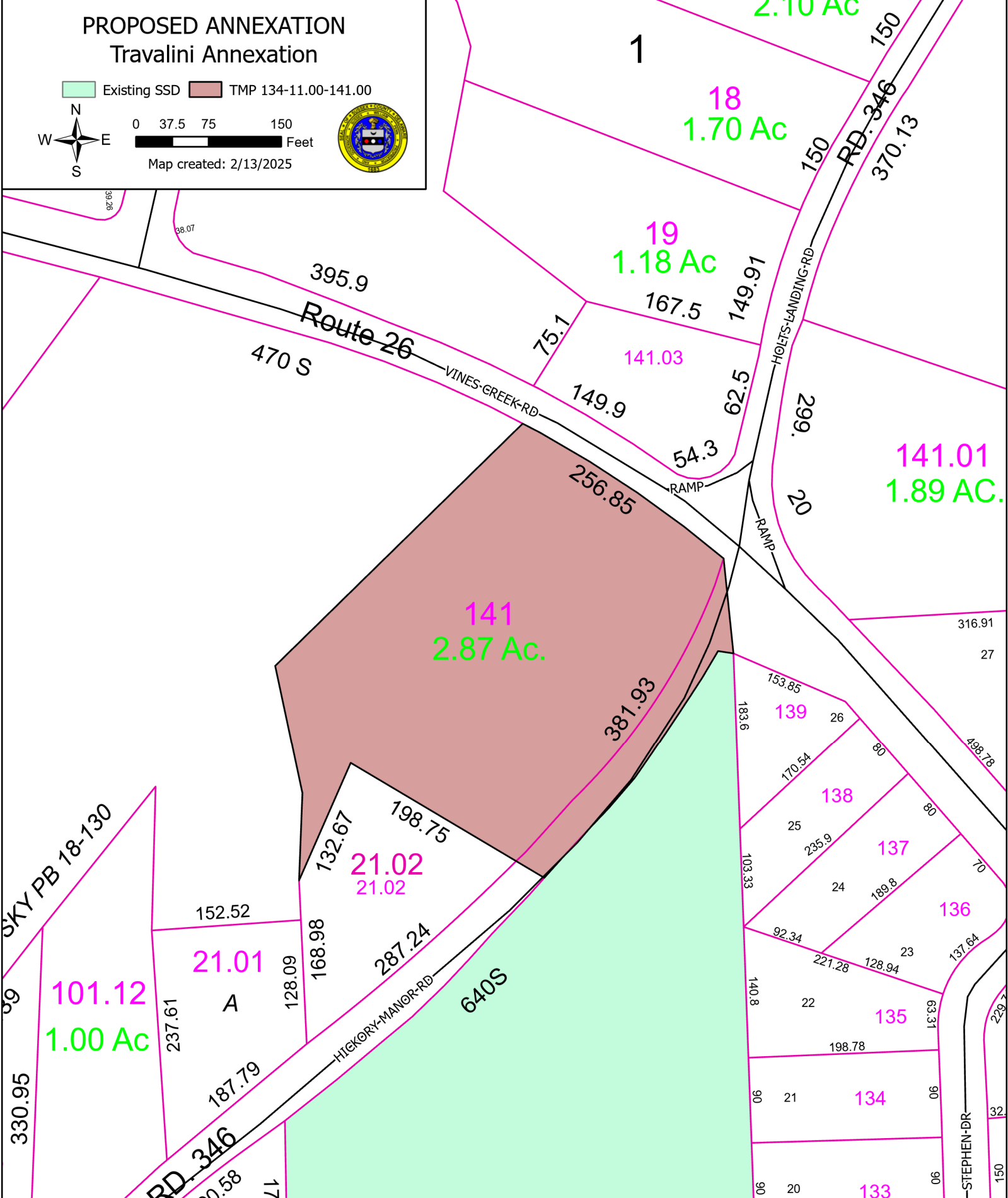


PROPOSED ANNEXATION
Travalini Annexation

Existing SSD TMP 134-11.00-141.00



0 37.5 75 150
 Feet
 Map created: 2/13/2025



The proposed annexation is scheduled to be discussed March 4, 2025 at 1:30 PM
 in the Sussex County Council Chambers

For more information please visit: <https://sussexcountyde.gov/proposed-projects-schedules>
 Or call Sussex County Utility Planning at 302-855-7370

DB 4548-165