

ORDINANCE NO. _____

AN ORDINANCE TO AMEND THE FUTURE LAND USE MAP OF THE COMPREHENSIVE PLAN IN RELATION TO TAX PARCEL NO. 132-2.00-264.00 (PORTION OF)

WHEREAS, on November 26th, 2019, the Sussex County Planning and Zoning Office received an application for Change of Zone No. 1910,

WHEREAS, the Sussex County Council will consider Change of Zone No. 1910 from an AR-1 Agricultural Residential District to a GR General Residential District for a certain parcel of land lying and being in Broad Creek Hundred, Sussex County, containing 5.03 acres, more or less (A portion of Tax Parcel No. 132-2.00-264.00) (the "Property"); and

WHEREAS, the Property is designated as being within the Low Density Area as set forth in the Future Land Use Map identified as Figure 4.5-1 in the Plan, and the Low Density Area does not permit such GR Zoning; and

WHEREAS, Sussex County Council desires to adopt this Ordinance amending the Future Land Use Map of the Plan with minor amendments; and

WHEREAS, in accordance with the required process for public hearings on ordinances such as this one, both Sussex County Council and the Sussex County Planning & Zoning Commission will hold public hearings on this Ordinance, but limited in scope to this specific proposed amendment to the Future Land Use Map contained in the Plan.

NOW, THEREFORE, THE COUNTY OF SUSSEX HEREBY ORDAINS:

Section 1. The Future Land Use Map identified as Figure 4.5-1 of the Sussex County Comprehensive Plan is hereby amended to change the Area designation part of Sussex County Parcel. No. 132-2.00-264.00 from the Low Density Area to the Developing Area. The portion of Sussex County Parcel. No. 132-2.00-264.00 so changed is identified in Exhibit A, attached hereto and incorporated herein.

Section 2. This Ordinance shall also take effect following its adoption by majority vote of all members of the County Council of Sussex County, Delaware, and upon certification by the State of Delaware.



Sussex County

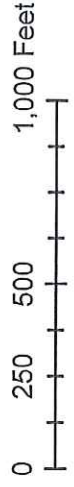


Exhibit A
Brickyard Apartments Future Land Use Map Amendment
132-2.00-264.00



Legend

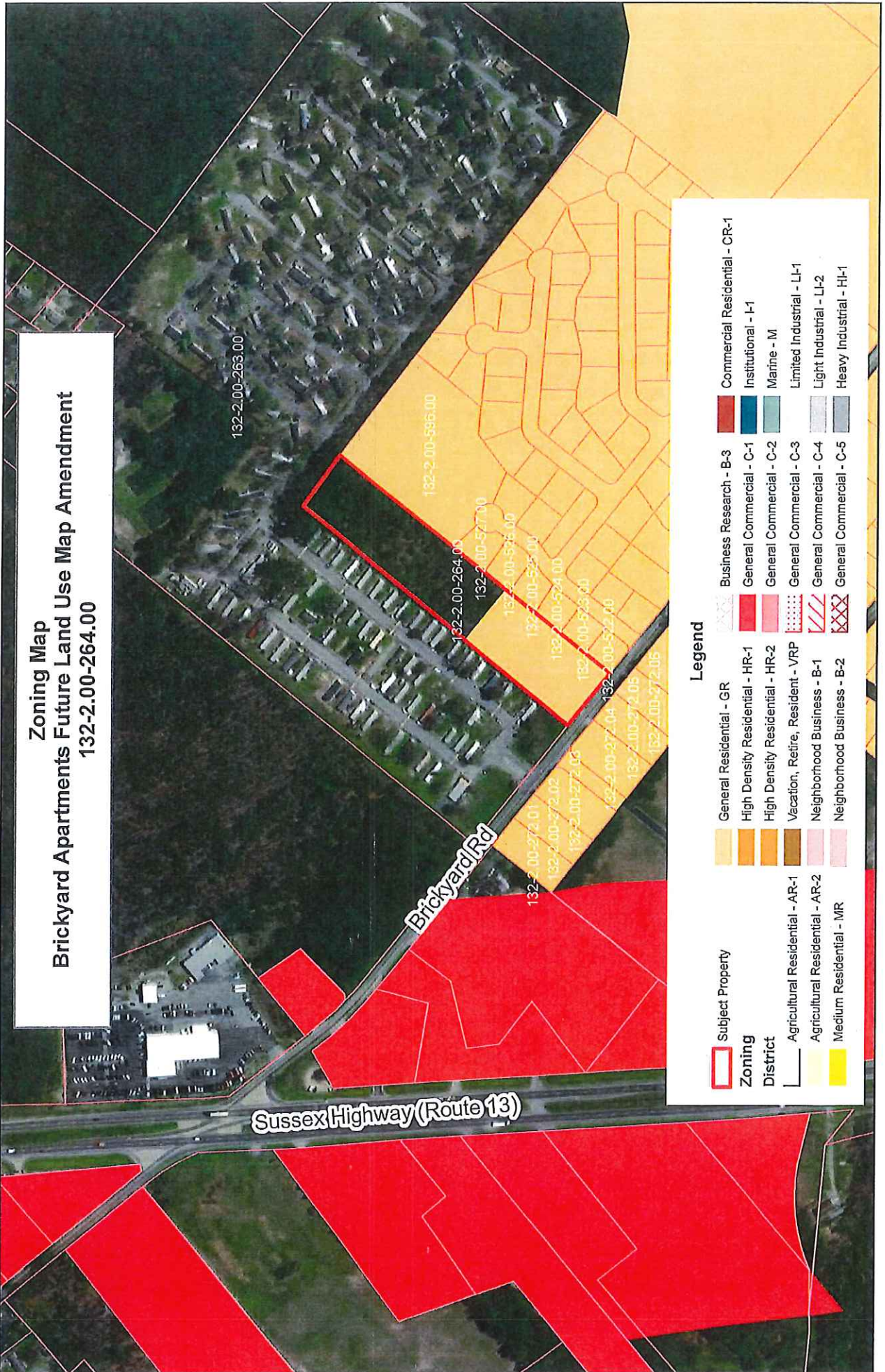
- Subject Property
- Tax Parcels





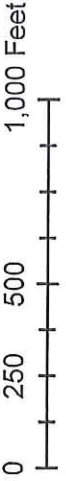
Sussex County

Zoning Map
Brickyard Apartments Future Land Use Map Amendment
132-2.00-264.00



Legend

	Subject Property		General Residential - GR		Business Research - B-3		Commercial Residential - CR-1
	Zoning		High Density Residential - HR-1		General Commercial - C-1		Institutional - I-1
	District		High Density Residential - HR-2		General Commercial - C-2		Marine - M
			Vacation, Retire, Resident - VRP		General Commercial - C-3		Limited Industrial - LI-1
			Neighborhood Business - B-1		General Commercial - C-4		Light Industrial - LI-2
			Neighborhood Business - B-2		General Commercial - C-5		Heavy Industrial - HI-1





Sussex County



**Future Land Use
Brickyard Apartments Future Land Use Map Amendment
132-2.00-264.00**

