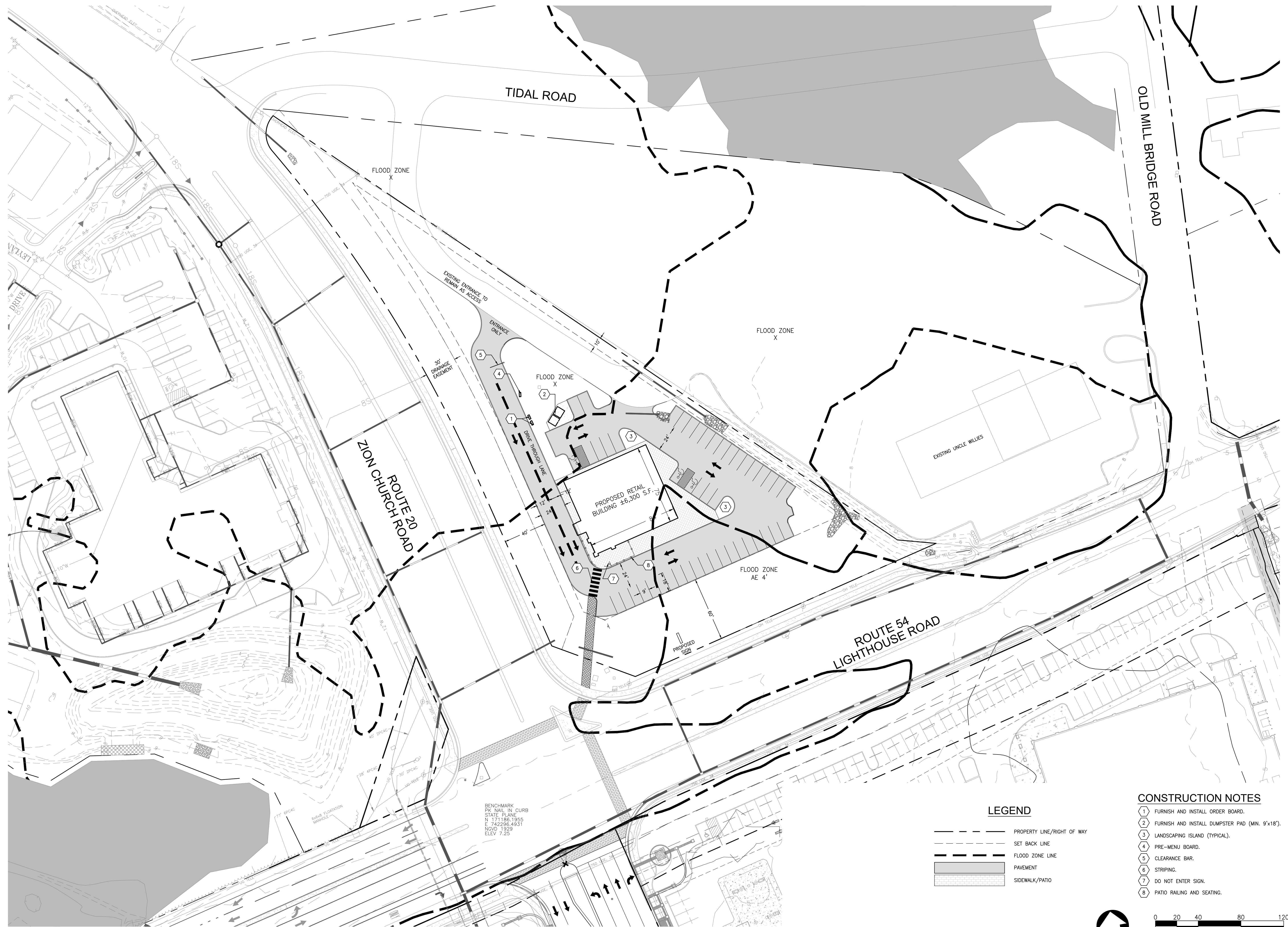


PLOT CODE
 PNT-RED 1/8" = 1/4" (25mm)
 PNT-YELLOW 1/8" = 1/4" (25mm)
 PNT-ORANGE 1/8" = 1/4" (25mm)
 PNT-GREEN 1/8" = 1/4" (25mm)
 PNT-BLUE 1/8" = 1/4" (25mm)
 PNT-BROWN 1/8" = 1/4" (25mm)
 PNT-WHITE 1/8" = 1/4" (25mm)



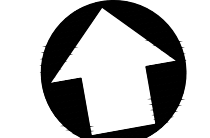
BENCHMARK
 PK NAIL IN CURB
 STATE PLANE
 N 171186.1955
 E 742296.4951
 NOVD 1929
 ELEV 7.25

LEGEND

- PROPERTY LINE/RIGHT OF WAY
- - - SET BACK LINE
- - - FLOOD ZONE LINE
- ▒ PAVEMENT
- ▒ SIDEWALK/PATIO

CONSTRUCTION NOTES

- 1 FURNISH AND INSTALL ORDER BOARD.
- 2 FURNISH AND INSTALL DUMPSTER PAD (MIN. 9'x18').
- 3 LANDSCAPING ISLAND (TYPICAL).
- 4 PRE-MENU BOARD.
- 5 CLEARANCE BAR.
- 6 STRIPING.
- 7 DO NOT ENTER SIGN.
- 8 PATIO RAILING AND SEATING.



PRINTS ISSUED FOR: PRELIMINARY SITE PLAN	
DATE	
REVISIONS	
NO.	
 GEORGE, MILES & BUHR, LLC ARCHITECTS & ENGINEERS SALISBURY • BALTIMORE • SEAFORD 206 WEST MAIN STREET SALISBURY, MARYLAND 21801 410-742-3115, FAX 410-548-9790 www.gmbnet.com	

AMERICANA BAYSIDE

BALTIMORE HUNDRED
SUSSEX COUNTY, DELAWARE

PARCEL P
PRELIMINARY SITE
PLAN

SCALE: 1" = 40'	SHEET NO.
DESIGN BY: KK	PSP-2
DRAWN BY: RFT	
CHECKED BY:	
GMB FILE: 200018	
DATE: FEB 2020	