

RESOLUTION NO. R 018 24

SOUTH BLADES AREA OF THE SUSSEX COUNTY UNIFIED SANITARY SEWER DISTRICT DECLARED UNDER THE PROVISIONS OF TITLE 9, CHAPTER 65 OF THE DELAWARE CODE

WHEREAS, the eligible voters of the proposed South Blades Area approved the creation of the sewer area by a vote of 1 to 0 in an election held on September 6, 2024; and

WHEREAS, Title 9, Delaware Code, Section 6507 requires the County Council to issue a determination of the sewer district within thirty days of its approval by the eligible voters.

NOW, THEREFORE, BE IT RESOLVED that the County Council of Sussex County, Delaware hereby determines that the eligible voters of the South Blades Area of the Sussex County Unified Sanitary Sewer District have approved the creation of said area, that the description of the South Blades Area is described in Exhibit "A"; and that the said district is hereby declared to be validly constituted under the provisions of Title 9, Chapter 65 of the Delaware Code.

Exhibit "A"

Description of the South Blades Area of the Sussex County Unified Sanitary Sewer District

BEGINNING at a point situate on the western right of way (ROW) of Seaford Road (Rt. # 13A), said point being $\pm 1,020'$ northwest of the intersection of the centerlines of Seaford Road and O'Neal's Road, said point also being the northeast corner of lands, now or formerly (N/F) of Glen W. Eskridge, Trustee; thence by and with said lands of Eskridge in a southwesterly direction $\pm 1360.5'$ to a point, said point being on the eastern edge of a ROW of the Consolidated Rail Corp; thence passing through said ROW, $\pm 100'$ in a southeasterly direction to a point, being the northeastern corner of the lands N/F of Javed Farms, LLC; thence by and with said lands of Javed Farms LLC in the following directions and distances: (1) southwest $\pm 1496'$ to a point, and (2) southeast $\pm 2,032'$ to a point, said point also being the northerly ROW of O'Neal's Road; thence proceeding in a southwesterly direction and following an arc by and with said ROW a distance of $\pm 451'$ to a point, said point being in the centerline of Gum Branch Ditch and the northeastern corner of lands N/F of Peter and Natasha Singleton; thence proceeding with the centerline of said ditch in a generally westerly direction $\pm 2190'$ to a point, said point being the northeastern corner of lands N/F of Laurel Farm LLC; thence by and with said lands of Laurel Farm LLC in a southwesterly direction $\pm 329'$ to a point and the northwestern corner of lands N/F of O'Neal Farm LLC; thence by and with said lands of O'Neal Farm LLC in a westerly direction $\pm 328'$ to a point and the southeastern corner of lands N/F of Timothy and Julia Conaway, trustees, thence by and with said lands of Conaway in a northerly direction $\pm 1,080'$ to a point, said point being the southeastern corner of lands of Conaway and the southwestern corner of lands N/F of Donald Eisenbery, trustee; thence by and with said lands of Eisenbery, in the following directions and distances: (1) northeast $\pm 398'$ to a point, and (2) northwest $\pm 1,169'$ to a point, said point being on the southern property line of lands N/F of Jane Givens; thence by and with said lands of Jane Givens the following directions and distances: (1) northeast $\pm 2088'$ to a point, and (2) northwest $\pm 431'$ to a point and the southern corner of other lands of Jane Givens; thence proceeding with lands of Jane Givens in a northeasterly direction $\pm 818'$ to a point and the southern corner of lands N/F of Ronald Fensick; thence by and with said lands of Fensick in a northeasterly direction $\pm 412'$ to a point, said point being the southern corner of lands N/F of Edward and Sandra Dickerson; thence by and with said lands of Dickerson in a northeasterly direction $\pm 209'$ to a point and western corner of HH&JS LLC; thence by and with said lands of HH&JS LLC in a southeasterly direction $\pm 612'$ to a point being the southeastern corner of said lands of HH&JS LLC and the western edge of a ROW of the Consolidated Rail Corp; thence passing through said ROW, $\pm 112'$ in a southeasterly direction to a point being the eastern corner of said ROW and the southwestern corner of Sussex Manor; thence by and with Sussex Manor in the following directions and distances: (1) southeast $\pm 99'$ to a point, (2) northeast $\pm 473'$ to a point, and (3) east $\pm 624'$ to a point and the northwestern corner of lands of Jason and Leslie

Waldridge; thence by and with said lands of Waldridge in the following directions and distances: (1) south $\pm 261.92'$ to a point, and (2) east $\pm 351.30'$ to a point situate on the westerly right of way (ROW) of Seaford Road (Rt. # 13A); thence by and with said ROW in a southeasterly direction $\pm 1036'$ to a point, said point being that of the BEGINNING.

NOTE: The above description has been prepared using Sussex County Tax Map No. 132-6.00 & 132-11.00.

The South Blades Area of the Sussex County Unified Sanitary Sewer District is within these boundaries. A map drawn to scale indicating the boundaries of the area is attached.


BE IT FURTHER RESOLVED that the Sussex County Council directs the County Engineer and the Attorney for the County Council to procure the necessary lands and rights-of-way by purchase, agreement, or condemnation in accordance with the existing statutes.

BE IT FURTHER RESOLVED that the Sussex County Council directs the County Finance Director and County Engineer to apply for, accept, and receive grants, loans, and other funding necessary to provide adequate financing for the planning, design, construction, and all other phases of the sanitary sewer district.

BE IT FURTHER RESOLVED that the County Engineer is hereby directed to prepare maps, plans, specifications and estimates, let contracts for and supervise the construction and maintenance of, or enlarging and remodeling of, any structures required to provide for the safe disposal of sewage in the sanitary sewer district.

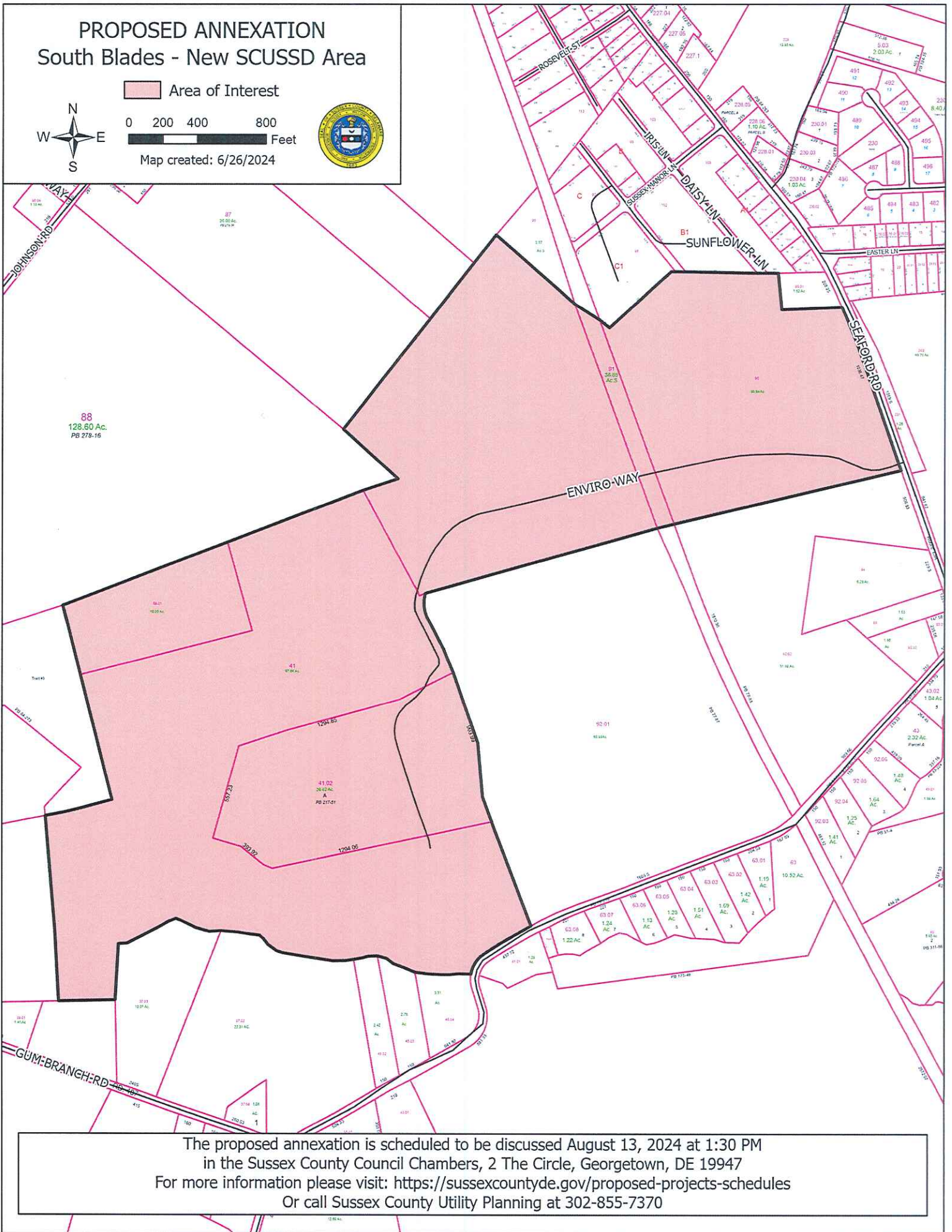
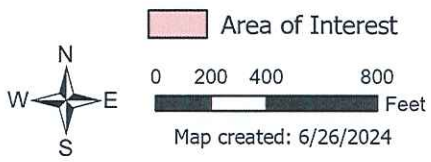
BE IT FURTHER RESOLVED that this Resolution shall take effect immediately upon its adoption by majority vote of all members of the County Council of Sussex County, Delaware.

I DO HEREBY CERTIFY THAT THE FOREGOING IS A TRUE AND CORRECT COPY OF RESOLUTION NO. R 018 24 ADOPTED BY THE SUSSEX COUNTY COUNCIL ON THE 24TH DAY OF SEPTEMBER 2024.



Tracy N. Torbert
Clerk of the Council

PROPOSED ANNEXATION South Blades - New SCUSSD Area



The proposed annexation is scheduled to be discussed August 13, 2024 at 1:30 PM
in the Sussex County Council Chambers, 2 The Circle, Georgetown, DE 19947
For more information please visit: <https://sussexcountyde.gov/proposed-projects-schedules>
Or call Sussex County Utility Planning at 302-855-7370